

Track Hanging Door

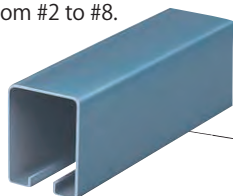
Box Rail End Caps

Mounted at the end of the bracket, and it prevents the hanger wheel from dropping off.



Box Rails

There are tracks for a hanger wheel running inside, and standard is from #2 to #8.



Brackets

Brackets mount box rails on a structure. There are 2 types of brackets; wall-mount and ceiling-mount. Each type vary in shape from single to quadruple.

※Brackets are basically mounted at intervals of 455mm.



Jointing Brackets

Used at a jointing part of box rails.

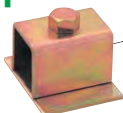
Hanger Wheels

There are hangers of double wheels (#2-#8) and a single wheel (#2-#5). You can choose it according to the weight or the purpose of use.



Center Doorstop

Screwed to a box rail inside groove, and it is used as a doorstop.



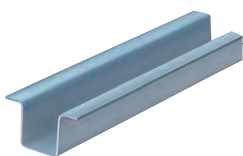
Aprons (Plates)

These fitting connect hanger wheels with doors. Aprons are used for wooden doors, and plates are for steel doors.



Guide Rails

There are rails for guide rollers from #2-#5 (also #6) and #7 (also #8).



Guide Rollers

Used at the bottom of the hanging doors for vibration isolation. There are 3 types of guide rollers; for standard, for wooden doors, and for bolt type.

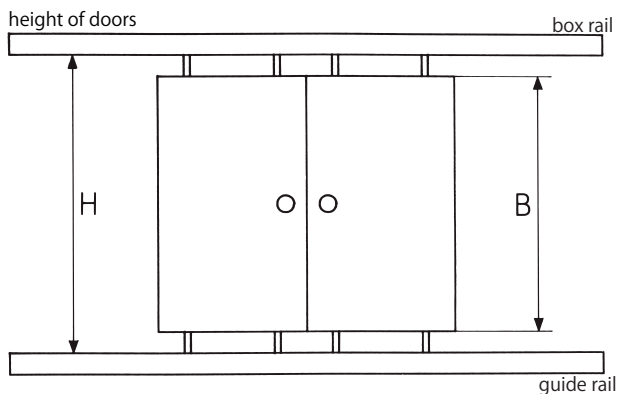


Floor Center Stop

Screwed to the inside of the guide rail, and it is used as a stopper.



Information to design track hanging doors

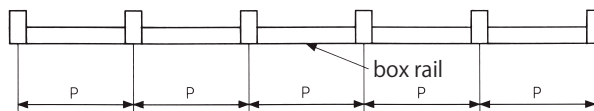


You can use following chart as a guide for total dimensions of gaps between rails and doors.

H - B (distance between top and bottom)	#2	#3	#4	#5	#6	#7	#8
	60	70	90	95	120	130	130

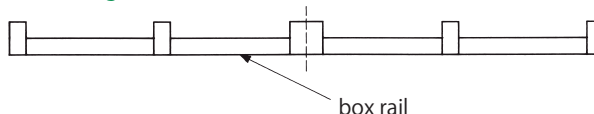
Mounting box rail

Brackets are basically mounted at intervals of 455mm.



Mounting box rail

Jointing brackets are needed for a rail joint.



appropriate weight per a door

[] when used with urethane wheels

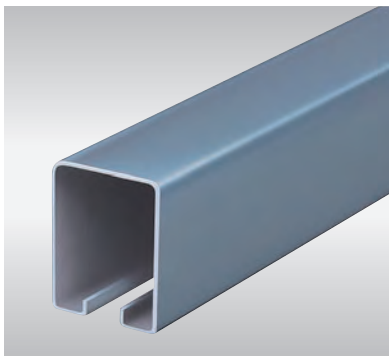
size(mm)	#2	#3	#4	#5	#6	#7	#8
appropriate weight per 2 hangers (kg)	1whl 50	75 [55]	180	250			
	2whls 70	150 [115]	300	500	700	1000	1500

Track Hanging Door

Property of hot dip galvanized steel

- Under normal environment, galvanized surface forms fine protective films of zinc carbonate basic by reaction with oxygen in the air. It shows high corrosion resistance.
- Surface plated with pure zinc, is suitable for the needs of paintless and corrosion resistance.
- Give a first coat with "Etch primer" or "Wash primer" before painting.
- You can also use resistance welding (spot, seam), arc welding and soldering as well as ordinary steel sheets.

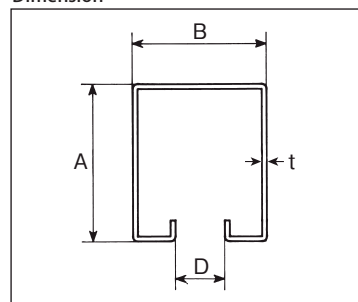
Box Rail (coating product)



- #2-#5 resist rust by using surface treated steel.

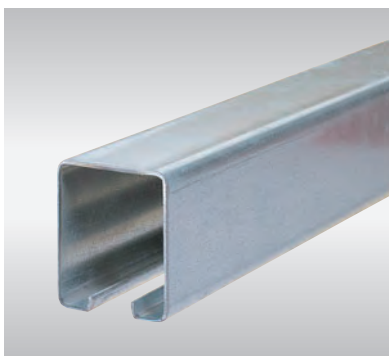
material	#2-#5	hot dip galvanized steel	finishing	coating both surfaces of high quality urethane
	#6-#8	steel		

Dimension



size No.	1820mm		2730mm		3640mm		4550mm		5460mm		7280mm		size(mm)			
	item	price(JPY)	item	price(JPY)	item	price(JPY)	item	price(JPY)	item	price(JPY)	item	price(JPY)	A	B	D	t
#2	2TR18	2,900	2TR27	4,800	2TR36	6,350	2TR45	9,000	2TR54	11,050	2TR72	14,960	45	38	14	1.2
#3	3TR18	3,300	3TR27	5,500	3TR36	7,300	3TR45	10,740	3TR54	13,300	3TR72	17,700	57	47	16	1.6
#4	4TR18	7,250	4TR27	11,900	4TR36	15,800	4TR45	22,330	4TR54	27,670	4TR72	37,400	75	56	16	2.0
#5	5TR18	12,400	5TR27	20,300	5TR36	27,100	5TR45	40,640	5TR54	52,270	5TR72	77,250	90	65	22	3.0
#6	6TR18	24,390	6TR27	37,560	—	—	—	—	—	—	—	—	115	82	28	4.5
#7	7TR18	32,700	7TR27	51,800	—	—	—	—	—	—	—	—	140	100	35	4.5
#8	8TR18	57,250	8TR27	88,500	—	—	—	—	—	—	—	—	170	117	35	6.0

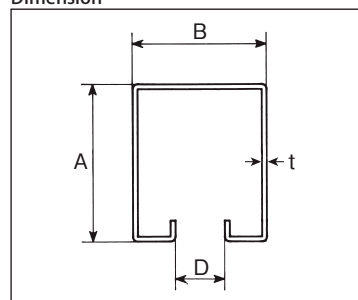
Box Rail (hot dip galvanized steel)



- Coating weight / 60-90(Z08-12)

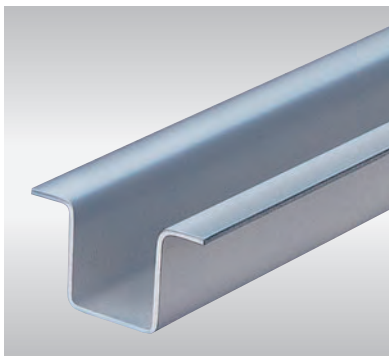
material	hot dip galvanized steel
----------	--------------------------

Dimension



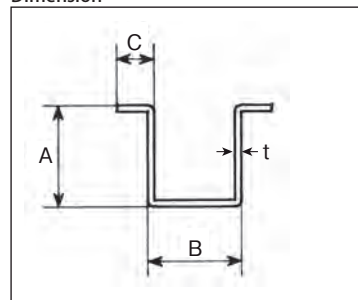
size No.	1820mm		2730mm		3640mm		4550mm		5460mm		size(mm)			
	item	price(JPY)	item	price(JPY)	item	price(JPY)	item	price(JPY)	item	price(JPY)	A	B	D	t
#2	G2TR18	2,820	G2TR27	4,660	G2TR36	6,160	G2TR45	8,730	G2TR54	10,720	45	38	14	1.2
#3	G3TR18	3,210	G3TR27	5,340	G3TR36	7,100	G3TR45	10,420	G3TR54	12,910	57	47	16	1.6
#4	G4TR18	7,040	G4TR27	11,550	G4TR36	15,330	G4TR45	21,670	G4TR54	26,840	75	56	16	2.0

Guide Rail



material	hot dip galvanized steel
----------	--------------------------

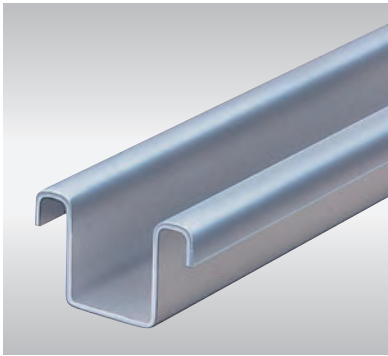
Dimension



size No.	1820mm		2730mm		3640mm		4550mm		5460mm		7280mm		size(mm)			
	item	price(JPY)	item	price(JPY)	item	price(JPY)	item	price(JPY)	item	price(JPY)	item	price(JPY)	A	B	C	t
#2	2GR18	1,450	2GR27	2,350	2GR36	3,050	2GR45	4,500	2GR54	5,500	2GR72	7,570	22	20	8	1.2
#3	3GR18	1,500	3GR27	2,400	3GR36	3,150	3GR45	4,600	3GR54	5,700	3GR72	7,800	25	25	12	1.2
#4	4GR18	4,350	4GR27	6,560	4GR36	8,800	4GR45	12,960	4GR54	15,730	4GR72	21,290	34	30	13	1.6
#5	5GR18	7,050	5GR27	10,850	5GR36	14,450	5GR45	22,280	5GR54	28,260	5GR72	37,390	50	39	16	2.0
#7	7GR18	10,750	7GR27	17,070	—	—	—	—	—	—	—	—	70	52	23	3.0

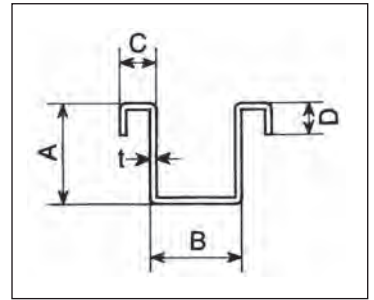
*#5 is also for #6, #7 is also for #8

Guide Rail With Lips



● The guide rail is less likely to be turned over with downward lips on the both ends, so it is suitable for heavy traffic place.

Dimension



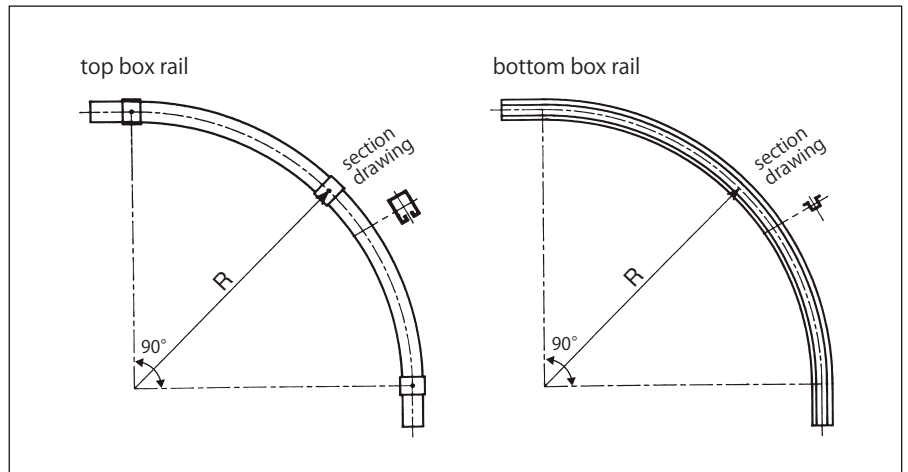
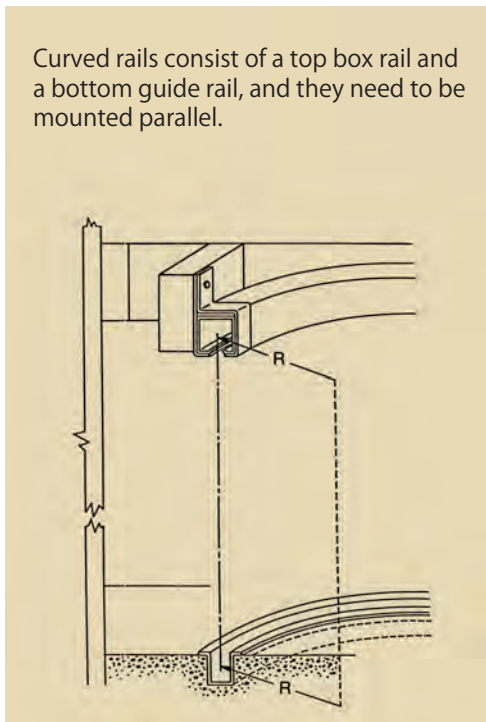
material hot dip galvanized steel

size No.	1820mm		2730mm		3640mm		4550mm		5460mm		7280mm		size(mm)				
	item	price(JPY)	item	price(JPY)	item	price(JPY)	item	price(JPY)	item	price(JPY)	item	price(JPY)	A	B	C	D	t
#3	3LGR18	1,950	3LGR27	2,900	3LGR36	3,850	3LGR45	5,500	3LGR54	6,710	3LGR72	10,780	25	25	10	8	1.2
#5	5LGR18	8,550	5LGR27	12,850	—	—	—	—	—	—	—	—	50	39	16	12	2.0
#7	7LGR18	14,100	7LGR27	21,400	—	—	—	—	—	—	—	—	70	52	23	16	3.0

*#5 is also for #6, #7 is also for #8.

Curved Rail (top/bottom)

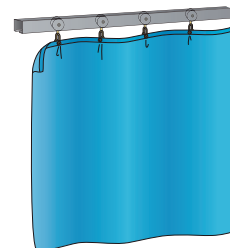
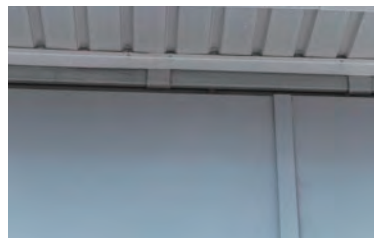
Curved rails consist of a top box rail and a bottom guide rail, and they need to be mounted parallel.



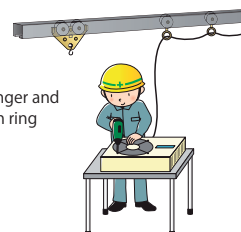
material hot dip galvanized steel finishing top urethane coating

size No.	top box rail		bottom box rail		size(mm)
	item	price(JPY)	item	price(JPY)	R
#2	2KTR	29,600	—	—	550
	2KTR900	30,800	—	—	900
#3	3KTR	32,410	3KGR	17,800	550
	3KTR900	33,850	3KGR9	18,400	900
#4	4KTR	54,100	—	—	900

*#3 bottom box rail can be used as #2 or #4.



single wheel trolley door hanger with shackle



double-wheel trolley door hanger and single wheel door hanger with ring



single wheel trolley door hanger

Single Wheel Hanger



material	body	steel, polyamide resin				finishing	chromate plating
	wheel	steel					
size No.	item	size(mm)				load bearing (per 2 pcs)	price(JPY)
		B	D	W	d		
#2	2TAN	106	40	31	1/2"	50kg	2,130
#3	3TAN	125	50	37	5/8"	75kg	2,240

*#4 and #5 require hanger with bearing.

Double-Wheel Hanger



material	body	steel, oilless metal				finishing	chromate plating	
	wheel	steel						
size No.	item	size(mm)				load bearing (per 2 pcs)	price(JPY)	
		A	B	D	W			d
#2	2FUK	89	98	40	31	1/2"	70kg	2,240
	2FUK-L	89	157	40	31	1/2"	70kg	3,790
#3	3FUK	118	111	50	37	5/8"	150kg	2,300
	3FUK-4B	118	145	50	37	5/8"	150kg	2,670
	3FUK-L	118	161	50	37	5/8"	150kg	3,930
#4	4FUK	143	149.5	65	42	5/8"	300kg	3,960
	4FUK-L	143	199.5	65	42	5/8"	300kg	6,460

*Use hanger with bearing for #5 and #6.

Single Wheel Hanger (Bearing)



material	body	steel, polyamide resin				finishing	chromate plating
	wheel	full hardened bearing					
size No.	item	size(mm)				load bearing (per 2 pcs)	price(JPY)
		B	D	W	d		
#2	2TANBE	106	40	32	1/2"	50kg	2,850
	2TNB-L	165	40	32	1/2"	50kg	4,860
	3TANBE	125	50	39	5/8"	75kg	2,950
#3	3TNB-L	186	50	39	5/8"	75kg	5,020
	3TNB-LL	201	50	39	5/8"	75kg	5,210
	3TNB-12	125	50	39	M12	75kg	4,600
#4	4TANBE	157.5	65	44	5/8"	180kg	4,650
	4TNB-L	207.5	65	44	5/8"	180kg	7,150
#5	5TANBE	206	80	53.5	3/4"	250kg	11,600
	5TNB-L	276	80	53.5	3/4"	250kg	15,560

*3TNB-12 (M12bolt) can't use an apron because of the size of the nut. Use #3 plate (3PL12M) for M12.

Double-Wheel Hanger (Bearing)



material	body	steel, oilless metal				finishing	chromate plating	
	wheel	full hardened bearing						
size No.	item	size(mm)				load bearing (per 2 pcs)	price(JPY)	
		A	B	D	W			d
#2	2FUKBE	88	101	40	32	1/2"	70kg	7,000
	2FKB-L	88	161	40	32	1/2"	70kg	8,550
	3FUKBE	109	114	50	39	5/8"	150kg	7,800
#3	3FKB-4B	109	143	50	39	5/8"	150kg	8,500
	3FKB-L	109	164	50	39	5/8"	150kg	9,430
	3FKB-LL	109	199	50	39	5/8"	150kg	10,300
#4	4FUKBE	138	153.5	65	44	5/8"	300kg	10,200
	4FKB-L	138	204.5	65	44	5/8"	300kg	12,700
#5	5FUKBE	168	205	80	53.5	3/4"	500kg	12,750
	5FKB-L	168	275	80	53.5	3/4"	500kg	16,710
#6	6FUKBE	210	210	100	63	3/4"	700kg	19,400
	6FKB-L	210	281	100	63	3/4"	700kg	23,360
#7	7FUKBE	260	257.5	125	80	1"	1,000kg	41,750
#8	8FUKBE	310	300	150	91	1"	1,500kg	63,250

Single Wheel Hanger (Duracon)



*Available for #2 box rails made of steel, stainless steel or aluminium.

material	body	steel, polyamide resin				finishing	chromate plating
	wheel	Duracon					
size No.	item	size(mm)				load bearing (per 2 pcs)	price(JPY)
		B	D	W	d		
#2	P2TAN	105	38	31	1/2"	50kg	2,820

Double-Wheel Hanger (Duracon)



*Available for #2 box rails made of steel, stainless steel, and aluminium.

material	body	steel, polyamide resin				finishing	chromate plating	
	wheel	Duracon						
size No.	item	size(mm)				load bearing (per 2 pcs)	price(JPY)	
		A	B	D	W			d
#2	P2FUK	87	97	38	31	1/2"	70kg	2,940

Single Wheel Hanger (Urethane)



●Reduced metal sound while traveling rail.

*Load bearing is different from metal wheels.

material	body	steel, polyamide resin				finishing	chromate plating
	wheel	steel, urethane					
size No.	item	size(mm)				load bearing (per 2 pcs)	price(JPY)
		B	D	W	d		
#2	2URTAN	106	40	31.5	1/2"	50kg	2,470
#3	3URTAN	125	50	38.5	5/8"	55kg	2,610

Double-Wheel Hanger (Urethane)



●Reduced metal sound while traveling rail.

*Load bearing is different from metal wheels.

material	body	steel, oilless metal				finishing	chromate plating	
	wheel	steel, urethane						
size No.	item	size(mm)				load bearing (per 2 pcs)	price(JPY)	
		A	B	D	W			d
#2	2URFUK	89	98	40	31.5	1/2"	70kg	2,710
#3	3URFUK	118	111	50	38.5	5/8"	115kg	2,960

*Long bolt spec is available as well as double-wheel hanger with bearing.

Single Wheel Hanger (Flexible)

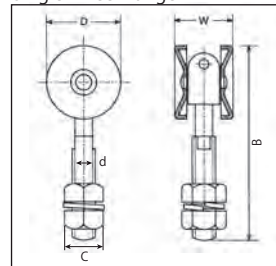


●Single wheel hanger for welding.

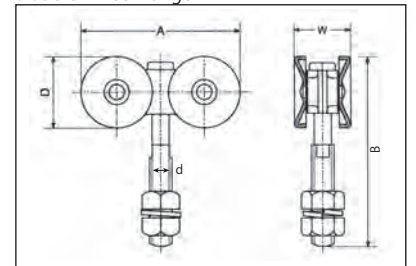
*Not be used for curved rails.

material	body	stainless steel polished flat bar				finishing	chromate plating
	wheel	full hardened bearing					
size No.	item	size(mm)				load bearing (per 1 pc)	price(JPY)
		B	C	D	W		
#3	3SNTNBE	137.5	19	50	39	37.5kg	2,800

Single wheel hanger



Double-wheel hanger

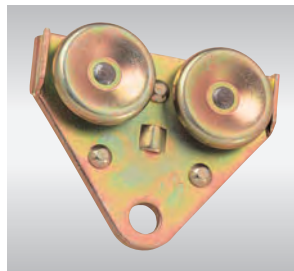


Single Wheel Trolley Hanger



material	body	steel		finishing	chromate plating		
	bearing	oilless metal					
size No.	item	size(mm)				load bearing (per 1pc)	price(JPY)
		C	D	W	d		
#2	2TNLL	81	40	31	12	25kg	1,780
#3	3TNLL	100	50	37	15	37.5kg	2,670
#4	4TNLL	118	65	42	20	90kg	3,040

Double-Wheel Trolley Hanger



material	body	steel		finishing	chromate plating			
	bearing	oilless metal						
size No.	item	size(mm)				load bearing (per 1pc)	price(JPY)	
		A	C	D	W			d
#2	2FKLL	95	77	40	31	12	35kg	2,860
#3	3FKLL	126	90	50	37	15	75kg	3,350
#4	4FKLL	150	105	65	42	20	150kg	4,120

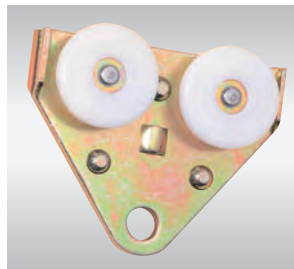
Single Wheel Trolley Hanger (Duracon)



*Available for #2 box rails made of steel, stainless steel or aluminium.

material	body	steel		finishing	chromate plating		
	bearing	oilless metal					
	wheel	Duracon					
size No.	item	size(mm)				load bearing (per 1pc)	price(JPY)
		C	D	W	d		
#2	P2TNLL	80	38	31	12	25kg	1,960

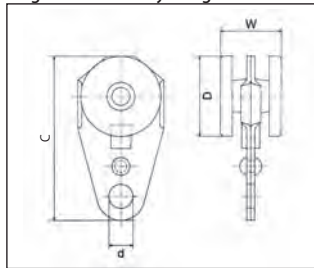
Double-Wheel Trolley Hanger (Duracon)



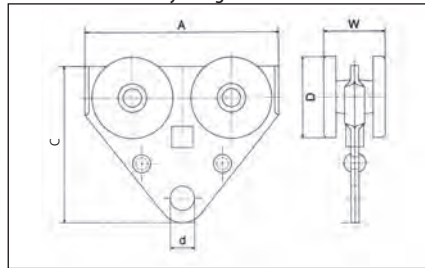
*Available for #2 box rails made of steel, stainless steel or aluminium.

material	body	steel		finishing	chromate plating			
	bearing	oilless metal						
	wheel	Duracon						
size No.	item	size(mm)				load bearing (per 1pc)	price(JPY)	
		A	C	D	W			d
#2	P2FKLL	95	77	38	31	12	35kg	2,860

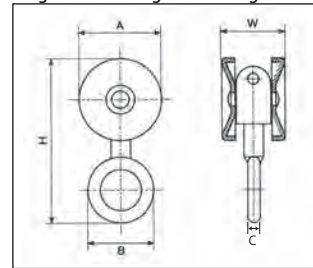
Single Wheel Trolley Hanger



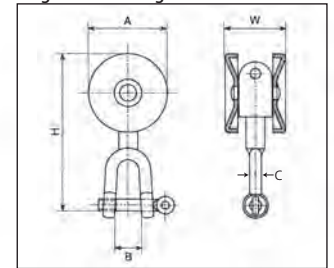
Double-Wheel Trolley Hanger



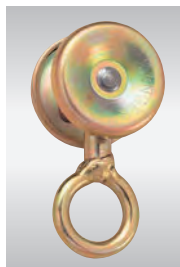
Single Wheel Hanger With Ring



Single Wheel Hanger With Shackle



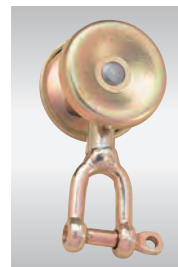
Single Wheel Hanger With Ring



*A hanging shaft rotates 360 degrees.

material	body	steel, polyamide resin		finishing	chromate plating			
	ring	ordinary steel						
size No.	item	size(mm)				load bearing (per 1pc)	price(JPY)	
		A	B	C	H			W
#2	2TNRG	40	32	6	80	31	25kg	2,490

Single Wheel Hanger With Shackle



*A hanging shaft rotates 360 degrees.

material	body	steel, polyamide resin		finishing	chromate plating			
	shackle	ordinary steel						
size No.	item	size(mm)				load bearing (per 1pc)	price(JPY)	
		A	B	C	H			W
#2	2TNSH	40	14	6	80	31	25kg	2,670

Single Wheel Hanger With Ring (Bearing)



*A hanging shaft rotates 360 degrees.

material	body	steel, polyamide resin		finishing	chromate plating			
	wheel	full hardened bearing						
	ring	ordinary steel						
size No.	item	size(mm)				load bearing (per 1pc)	price(JPY)	
		A	B	C	H			W
#2	2TNBERG	40	32	6	80	32	25kg	2,950
#3	3TNBERG	50	40	8	101	39	37.5kg	3,650

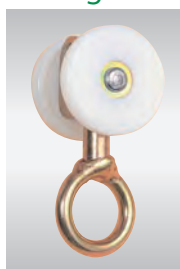
Single Wheel Hanger With Shackle (Bearing)



*A hanging shaft rotates 360 degrees.

material	body	steel, polyamide resin		finishing	chromate plating			
	wheel	full hardened bearing						
	ring	ordinary steel						
size No.	item	size(mm)				load bearing (per 1pc)	price(JPY)	
		A	B	C	H			W
#2	2TNBESH	40	14	6	80	32	25kg	3,150
#3	3TNBESH	50	16	8	101	39	37.5kg	3,750

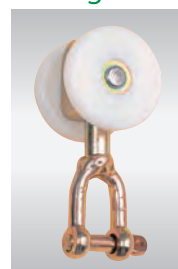
Single Wheel Hanger With Ring (Duracon)



*A hanging shaft rotates 360 degrees.
*Available for #2 box rails made of steel, stainless steel or aluminium.

material	body	steel, polyamide resin		finishing	chromate plating			
	wheel	Duracon						
	ring	ordinary steel						
size No.	item	size(mm)				load bearing (per 1pc)	price(JPY)	
		A	B	C	H			W
#2	P2TNRG	38	32	6	80	31	25kg	2,950

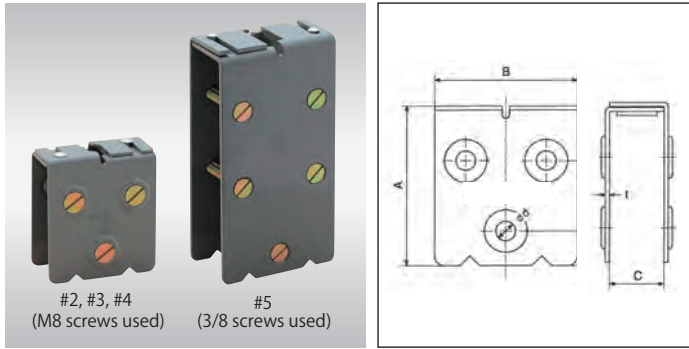
Single Wheel Hanger With Shackle (Duracon)



*A hanging shaft rotates 360 degrees.
*Available for #2 box rails made of steel, stainless steel or aluminium.

material	body	steel, polyamide resin		finishing	chromate plating			
	wheel	Duracon						
	ring	ordinary steel (screw 1/4")						
size No.	item	size(mm)				load bearing (per 1pc)	price(JPY)	
		A	B	C	H			W
#2	P2TNSH	38	14	6	80	31	25kg	3,320

Aprons



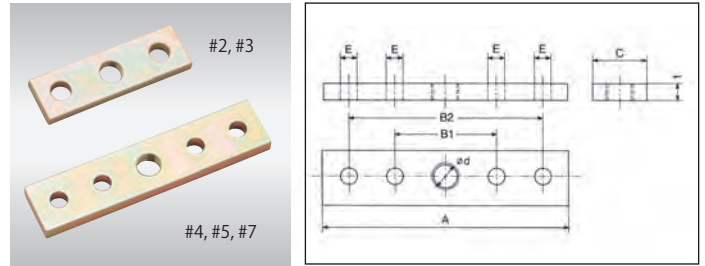
Used for connection between wooden doors and hanger wheels.

sizeNo.	item	size(mm)					price(JPY)
		A	B	C	d	t	
#2	2AP	90	80	30~45	10	2.3	1,020
#3	3AP	112	90	34~50	10	2.6	1,240
#4	4AP	127	100	38~60	10	2.6	1,650
#5	5AP	208	110	50~70	13	4.0	4,960

material	steel
finishing	urethane coating

*#5 apron can be used as #6.

Plates



A plate fixed on the top of the door is connected with wheels.

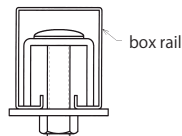
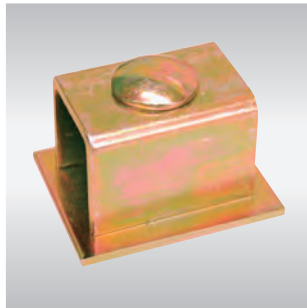
material	steel	finishing	chromate plating
----------	-------	-----------	------------------

size No.	item	size(mm)						mounting hole	price(JPY)
		A	B1	B2	C	E	d		
#2	2PL	80	54	—	25	10	W1/2	6	970
#3	3PL	100	68	—	32	10	W5/8	9	1,160
	3PL12M	100	60	—	32	9	M12	9	1,530
#4	4PL	145	60	115	32	10	W5/8	10	1,540
#5	5PL	205	80	160	50	15	W3/4	12	5,210
#7	7PL	300	110	220	65	24	W1"	22	5,730

*#5 can be used as #6, #7 can be used as #8.

*3PL12M is used for M12 wheel only.

Center Door Stop

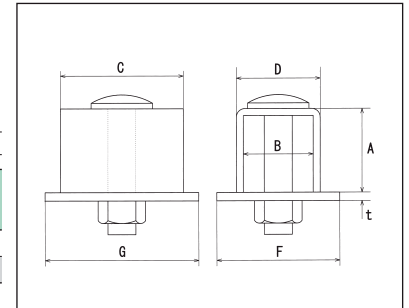


material	steel	finishing	chromate plating
----------	-------	-----------	------------------

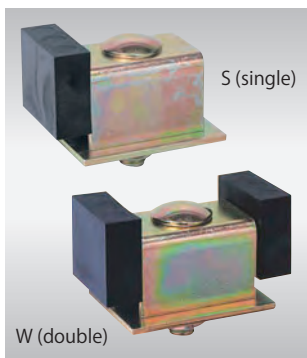
size No.	item	size(mm)							price(JPY)
		A	B	C	D	F	G	t	
#3	3TOA	30	25	44	30	44	55	3.0	650
#5	5TOA	52	42	40	50	70	48	4.0	1,250

*#3 can be used as #2 and #4.

*#5 can be used as #6.



Door Stop With Pad S (single) / W (double)



- PVC used as a pad is RoHS compliant product
- W(double) has pads on both sides.

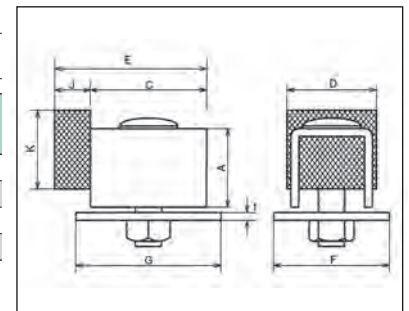
material	body	steel	finishing	chromate plating
	pad	PVC		

size No.	item	pad	size(mm)							price(JPY)	
			A	C	D	E	F	G	K		t
#3	3PTOAS	single	30	44	34	57.5	44	55	13.5	3.0	1,420
#5	5PTOAS		52	40	56	55.5	70	48	15.5	4.0	2,580
#3	3PTOAW	double	30	44	34	71	44	55	13.5	3.0	1,530
#5	5PTOAW		52	40	56	71	70	48	15.5	4.0	2,910

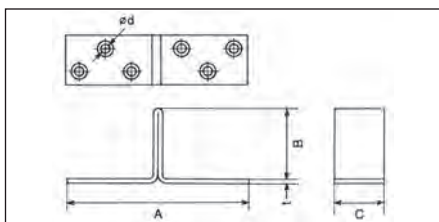
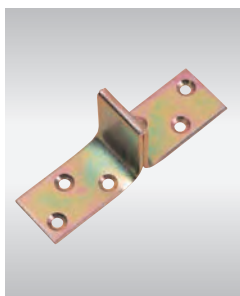
*Pads are required for urethane wheels or Duracon wheels.

*#3 can be used as #2 and #4.

*#5 can be used as #6.



Floor Center Stop



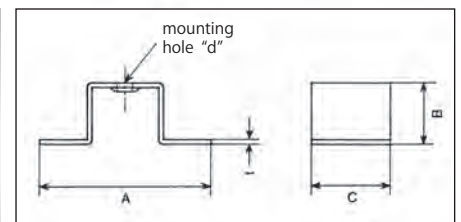
size No.	item	size(mm)					price(JPY)
		A	B	C	d	t	
#3	3SEK	80	32	22	4	2.0	310
#5	5SEK	100	55	30	4.5	2.5	580

material	steel
finishing	chromate plating

*Guide rail is required as the same No.

*#3 can be used as #4.

Guide Rail Anchor



●Welded to the bottom of guide rails and used as an anchor, it prevents rails from floating.

material	steel
finishing	unichromate plating

size No.	item	size(mm)					price(JPY)
		A	B	C	d	t	
#3	3AS	58	21	27	5.5	1.6	180

Single Box Rail Bracket (Wall Mount)



size No.	item	size(mm)					price(JPY)
		G	H	L	d		
#2	2Y1	18	97	45	10	500	
#3	3Y1	23	119	47	10	650	
#4	4Y1	32	147	60	14.5	1,240	
#5	5Y1	22	167	65	17	2,480	

*#6 6Y1, #7 7Y1 and #8 8Y1 are also used as wall mount single box rail jointing bracket.

Double Box Rail Bracket (Wall Mount)



size No.	item	size(mm)					price(JPY)
		F	G	H	L	d	
#2	2Y2	55	19	160	45	10	1,830
#3	3Y2	65	22	203	47	10	1,900
#4	4Y2	75	27	232	60	10	3,190
#5	5Y2	90	30	273	65	17	6,680

*#6 6Y2 is also used as wall mount double box rail jointing bracket.

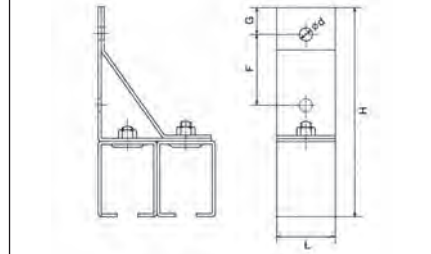
Triple Box Rail Bracket (Wall Mount)



size No.	item	size(mm)					price(JPY)
		F	G	H	L	d	
#2	2Y3	55	19	160	45	10	2,540
#3	3Y3	65	22	203	47	10	2,840
#4	4Y3	75	22	230	60	10	4,670
#5	5Y3	90	30	273	65	17	9,520

*See quadruple box rail jointing bracket below.

Box rail bracket (wall mount)



material	steel
finishing	urethane coating

Single Box Rail Jointing Bracket (Wall Mount)



size No.	no jointer		with jointer		size(mm)				
	item	price(JPY)	item	price(JPY)	D	G	H	L	d
#2	2YT1	1,080	2YT1-J	2,030	45	19	97	90	10
#3	3YT1	1,240	3YT1-J	2,360	47	23	119	94	10
#4	4YT1	2,420	4YT1-J	3,580	60	32	147	120	14.5
#5	5YT1	5,210	—	—	65	22	167	130	17
#6	6Y1	5,430	—	—	60	33	208	120	17
#7	7Y1	12,980	—	—	75	32	240	150	24
#8	8Y1	21,160	—	—	90	38	288	180	24

Double Box Rail Jointing Bracket (Wall Mount)



size No.	no jointer		with jointer		size(mm)					
	item	price(JPY)	item	price(JPY)	D	F	G	H	L	d
#2	2YT2	3,160	2YT2-J	5,060	45	55	19	160	90	10
#3	3YT2	3,840	3YT2-J	6,080	47	65	22	203	94	10
#4	4YT2	6,920	4YT2-J	9,240	60	75	27	232	120	10
#5	5YT2	15,190	—	—	65	90	30	273	130	17
#6	6Y2	17,810	—	—	60	100	32	332	120	17

Triple Box Rail Jointing Bracket (Wall Mount)



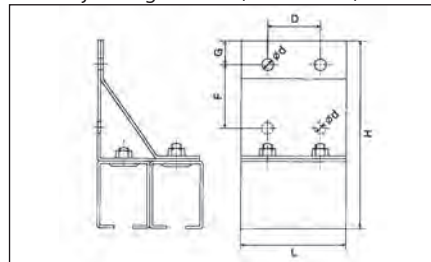
size No.	no jointer		with jointer		size(mm)					
	item	price(JPY)	item	price(JPY)	D	F	G	H	L	d
#2	2YT3	5,380	2YT3-J	8,230	45	55	19	160	90	10
#3	3YT3	5,790	3YT3-J	9,150	47	65	22	203	94	10
#4	4YT3	9,870	4YT3-J	13,350	60	75	22	230	120	10
#5	5YT3	20,390	—	—	65	90	30	273	130	17

Quadruple Box Rail Jointing Bracket (Wall Mount)



size No.	no jointer		with jointer		size(mm)					
	item	price(JPY)	item	price(JPY)	D	F	G	H	L	d
#2	2YT4	8,340	2YT4-J	12,140	45	55	20	160	90	10
#3	3YT4	8,870	3YT4-J	13,350	47	65	22	203	94	10
#4	4YT4	15,190	4YT4-J	19,830	60	75	22	230	120	10

Box rail jointing bracket (wall mount)



material	steel
finishing	urethane coating

Jointer



*Reduced slips on the rail.
*Can't use with carved rails.

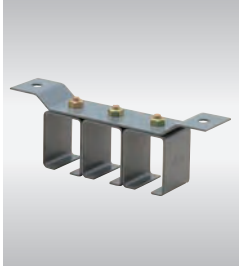
Single Box Rail Bracket (Ceiling Mount)



size No.	item	size(mm)					price(JPY)
		D	E	F	L	d	
#2	2T1	96	128	73	45	10	660
#3	3T1	112	142	89	47	10	710
#4	4T1	145	177	113	60	10	1,240
#5	5T1	142	186	135	65	17	3,250

●6T1 #6, 7T1 #7 and 8T1 #8 are also used as ceiling mount single box rail jointing brackets.

Triple Box Rail Bracket (Ceiling Mount)



size No.	item	size(mm)					price(JPY)
		D	E	F	L	d	
#2	2T3	188	220	73	45	10	2,250
#3	3T3	228	258	89	47	10	2,480
#4	4T3	278	312	113	60	10	3,960
#5	5T3	303	350	135	65	17	9,280

●Use ceiling mount quadruple box rail jointing brackets for ceiling mount quadruple box rail brackets.

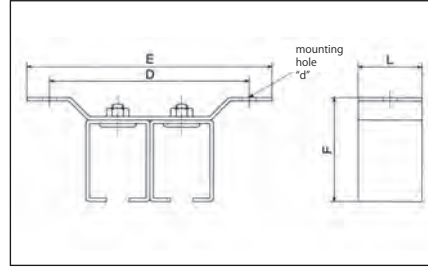
Double Box Rail Bracket (Ceiling Mount)



size No.	item	size(mm)					price(JPY)
		D	E	F	L	d	
#2	2T2	142	174	73	45	10	1,300
#3	3T2	168	198	89	47	10	1,600
#4	4T2	209	241	113	60	10	2,540
#5	5T2	225	270	135	65	17	6,560

●6T2 #6 is also used as a ceiling mount double box rail jointing bracket.

Box rail bracket (ceiling mount)



material	steel
finishing	urethane coating

Single Box Rail Jointing Bracket (Ceiling Mount)



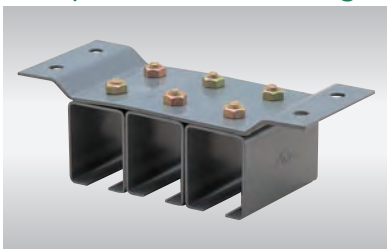
size No.	no jointer		with jointer		size(mm)					
	item	price(JPY)	item	price(JPY)	D	E	F	G	L	d
#2	2TT1	1,480	2TT1-J	2,430	96	128	73	45	90	10
#3	3TT1	1,530	3TT1-J	2,650	112	142	89	47	94	10
#4	4TT1	2,840	4TT1-J	4,000	145	177	111	60	120	10
#5	5TT1	6,030	—	—	142	186	135	65	130	17
#6	6T1	7,630	—	—	174	214	160	60	120	17
#7	7T1	15,910	—	—	200	250	205	75	150	20
#8	8T1	25,120	—	—	229	290	240	90	180	20

Double Box Rail Jointing Bracket (Ceiling Mount)



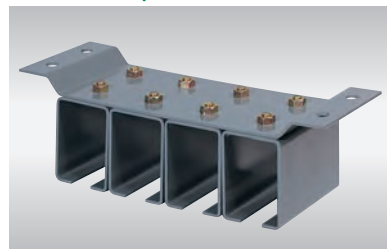
size No.	no jointer		with jointer		size(mm)					
	item	price(JPY)	item	price(JPY)	D	E	F	G	L	d
#2	2TT2	2,840	2TT2-J	4,740	142	174	73	45	90	10
#3	3TT2	3,370	3TT2-J	5,610	168	198	89	47	94	10
#4	4TT2	5,680	4TT2-J	8,000	209	241	111	60	120	10
#5	5TT2	12,420	—	—	225	270	135	65	130	17
#6	6T2	23,720	—	—	268	308	160	60	120	17

Triple Box Rail Jointing Bracket (Ceiling Mount)



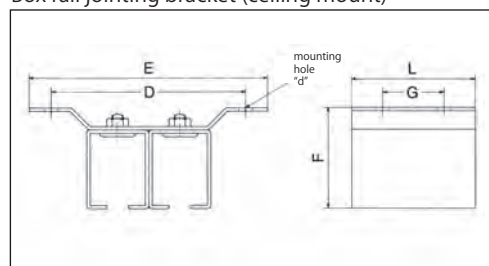
size No.	no jointer		with jointer		size(mm)					
	item	price(JPY)	item	price(JPY)	D	E	F	G	L	d
#2	2TT3	4,560	2TT3-J	7,410	188	220	73	45	90	10
#3	3TT3	5,080	3TT3-J	8,440	228	258	89	47	94	10
#4	4TT3	8,270	4TT3-J	11,750	278	312	111	60	120	10
#5	5TT3	18,620	—	—	303	350	135	65	130	17

Quadruple Box Rail Jointing Bracket (Ceiling Mount)



size No.	no jointer		with jointer		size(mm)					
	item	price(JPY)	item	price(JPY)	D	E	F	G	L	d
#2	2TT4	5,610	2TT4-J	9,410	232	264	73	45	90	10
#3	3TT4	7,450	3TT4-J	11,930	272	303	89	47	94	10
#4	4TT4	11,830	4TT4-J	16,470	338	371	111	60	120	10

Box rail jointing bracket (ceiling mount)



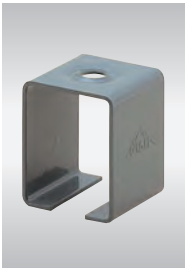
material	steel
finishing	urethane coating

Jointer



*Reduced slips on the rail.
*Can't use with carved rails.

Box Rail Direct Bracket (Ceiling Mount)



size No.	item	size(mm)					price(JPY)
		A	B	L	d	t	
#2	2BX	53	40	45	10	2.5	500
#3	3BX	67	50	47	10	2.6	530
#4	4BX	84	58	60	10	3.2	740
#5	5BX	100	68	65	17	5.0	1,710

*6BX #6, 7BX #7 and 8BX #8 can be used as direct jointing brackets.

Box Rail Direct Jointing Bracket (Ceiling Mount)

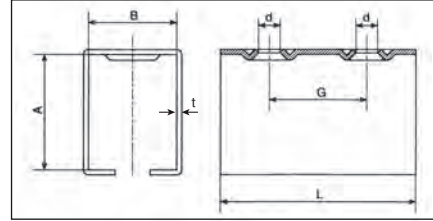


size No.	no jointer		with jointer		size(mm)					
	item	price(JPY)	item	price(JPY)	A	B	G	L	d	t
#2	2TBX	970	2TBX-J	1,920	53	40	45	90	10	2.5
#3	3TBX	980	3TBX-J	2,100	67	50	47	94	10	2.6
#4	4TBX	1,530	4TBX-J	2,690	84	58	60	120	10	3.2
#5	5TBX	3,420	—	—	100	68	65	130	17	5.0
#6	6BX	4,700	—	—	122	86	60	120	17	6.0
#7	7BX	9,820	—	—	147	105	75	150	20	9.0
#8	8BX	15,910	—	—	179	123	90	180	20	9.0

Jointer

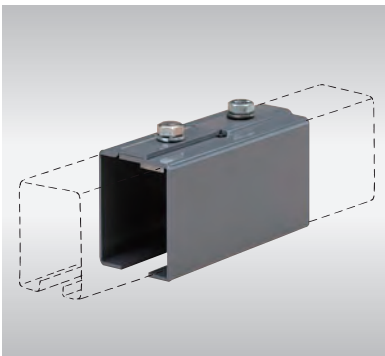


- *Reduced slips on the rail.
- *Can't use with carved rails.



material	steel
finishing	urethane coating

Box Rail Joint Holder

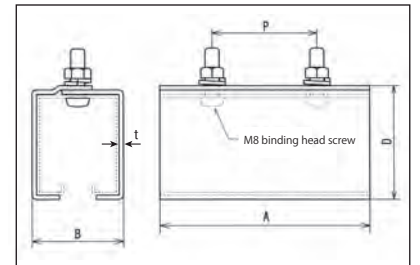


- This fitting can connect box rails to make a long box rail.
- *Mount brackets right next to a holder for reinforcement.
- *Only wall mount and ceiling mount brackets can be used together.
- *Use box rail jointing brackets (with jointer) for box rail direct brackets and make them the same height.
- *Cannot be used for connection with curved rails.

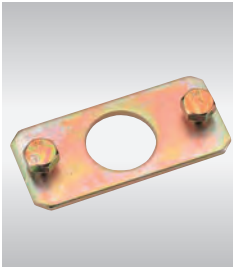
material	steel	finishing	urethane coating
----------	-------	-----------	------------------

size No.	item	size(mm)					price(JPY)
		A	B	D	P	t	
#2	2TRHD	120	42	51	60	2	2,840
#3	3TRHD	120	52	65	60	2.5	2,950
#4	3TRHD	120	62	85	60	3	3,610

*#2-#4 straight box rails have a hole drilling for holders.



Rail Fixing Plate

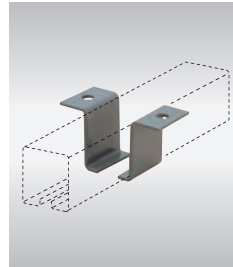


- Used for reducing slips between a box rails and bracket.

size No.	item	size(mm)					price(JPY)
		A	B	C	D	bolt	
#2	2KB	84	39	66	28	M8×12	460
#3	3KB	84	49	66	28	M8×12	480
#4	4KB	110	57	89	33	M10×12	600
#5	5KB	110	67	89	33	M10×12	710

*Only wall mount and ceiling mount brackets can be used together. It can't be used with box rail direct bracket.

Box Rail Fit Bracket (Ceiling Mount)



- Used for reducing slips between a box rail and a bracket.
- Left-and-right pair

size No.	item	size(mm)						price(JPY)
		A	C	D	E	d	t	
#2	2FIT	54	45	69	94	10	3	690
#3	3FIT	67	47	80	107	10	3	710
#4	4FIT	88	60	95	126	10	4	950
#5	5FIT	108	65	115	153	17	6	1,900

Rail Fixing Plate For Jointing



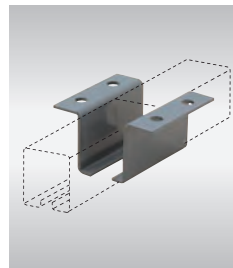
- Used for reducing slips at joint parts of splice brackets.
- Available for jointing brackets ceiling mount and wall mount.

size No.	item	size(mm)					price(JPY)
		A	B	C	D	bolt	
#2	2TKB	129	39	111	28	M8×12	870
#3	3TKB	131	49	113	28	M8×12	920
#4	4TKB	170	57	149	33	M10×12	1,150
#5	5TKB	175	67	154	33	M10×12	1,390

*Box rail direct bracket requires a jointer instead of a rail fixing plate.

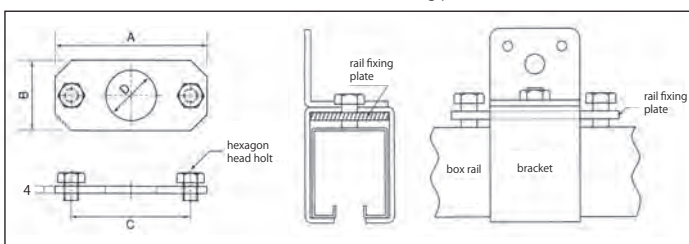
*Used same as a rail fixing plate.

Box Rail Fit Jointing Bracket (Ceiling Mount)

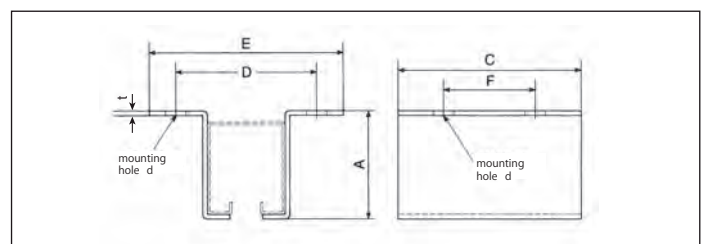


- Used for reducing slips between a box rail and a bracket.
- Left-and-right pair

size No.	item	size(mm)							price(JPY)
		A	C	D	E	F	d	t	
#2	2FITT	54	90	69	94	45	10	3	1,420
#3	3FITT	67	94	80	107	47	10	3	1,420
#4	4FITT	88	120	95	126	60	10	4	1,900
#5	5FITT	108	130	115	153	65	17	6	3,720



material	steel	finishing	Chromate plating
----------	-------	-----------	------------------

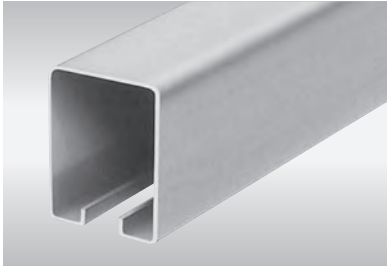


material	steel	finishing	urethane coating
----------	-------	-----------	------------------

Stainless Steel Track Hanging Door

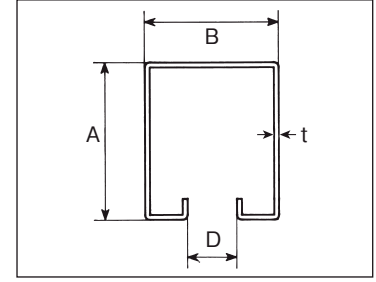
- Use of stainless steel track hanging door at:
 1. much humid places such as a bathhouse, etc.
 2. places exposed to sea breeze such as a coastal warehouse, etc.
 3. places near chemical solution such as a chemical plant, etc.
 4. places required good appearance such as a gym or a playground, etc.
 5. places to be kept clean such as a hospital or a food factory, etc.

Stainless Steel Box Rail



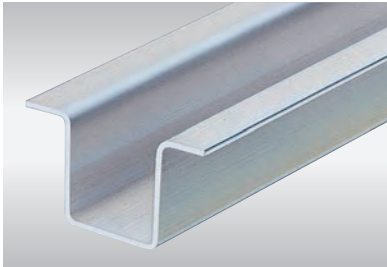
material SUS304

Dimension



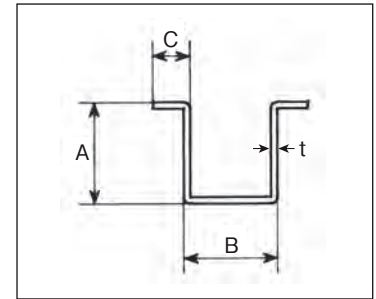
size No.	1820mm		2730mm		3640mm		4550mm		5460mm		7280mm		size(mm)			
	item	price(JPY)	item	price(JPY)	item	price(JPY)	item	price(JPY)	item	price(JPY)	item	price(JPY)	A	B	D	t
#2	S2TR18	16,200	S2TR27	24,200	S2TR36	32,400	S2TR45	44,550	S2TR54	53,460	S2TR72	71,280	45	38	14	1.2
#3	S3TR18	17,300	S3TR27	25,900	S3TR36	34,600	S3TR45	47,600	S3TR54	57,100	S3TR72	76,100	57	47	16	1.5
#4	S4TR18	26,800	S4TR27	40,200	S4TR36	53,600	S4TR45	73,700	S4TR54	88,440	S4TR72	117,920	75	56	16	2.0
#5	S5TR18	42,200	S5TR27	63,300	S5TR36	84,400	S5TR45	105,500	S5TR54	126,600	S5TR72	168,800	90	65	22	3.0

Stainless Steel Guide Rail



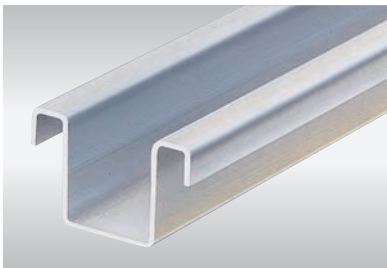
material SUS304

Dimension



size No.	1820mm		2730mm		3640mm		4550mm		5460mm		7280mm		size(mm)			
	item	price(JPY)	item	price(JPY)	item	price(JPY)	item	price(JPY)	item	price(JPY)	item	price(JPY)	A	B	C	t
#3	S3GR18	6,150	S3GR27	9,250	S3GR36	12,400	S3GR45	17,000	S3GR54	20,300	S3GR72	27,280	25	25	12	1.2
#5	S5GR18	31,520	S5GR27	47,290	—	—	—	—	—	—	—	—	50	39	16	2.0

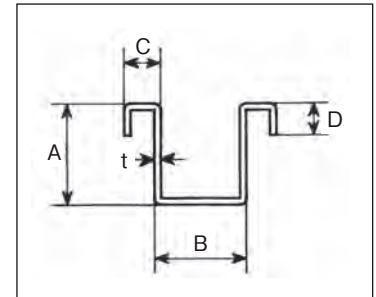
Stainless Steel Guide Rail With Lips



● The guide rail is less likely to be turned over with downward lips on the both ends, and suitable for heavy traffic place.

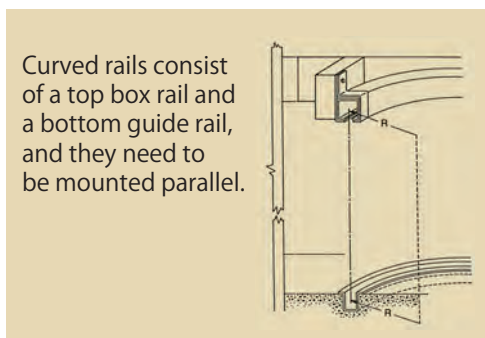
material SUS304

Dimension



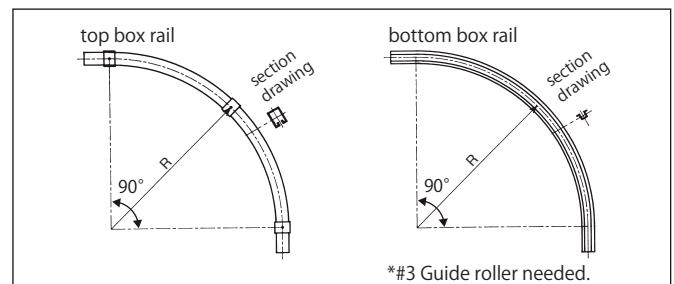
size No.	1820mm		2730mm		3640mm		4550mm		5460mm		7280mm		size(mm)				
	item	price(JPY)	item	price(JPY)	item	price(JPY)	item	price(JPY)	item	price(JPY)	item	price(JPY)	A	B	C	D	t
#3	S3LGR18	8,200	S3LGR27	12,400	S3LGR36	16,400	S3LGR45	22,500	S3LGR54	27,060	S3LGR72	36,080	25	25	10	8	1.2
#5	S5LGR18	33,100	S5LGR27	49,700	—	—	—	—	—	—	—	—	50	39	16	12	2.0

Stainless Steel Curved Rail (top/bottom)



Curved rails consist of a top box rail and a bottom guide rail, and they need to be mounted parallel.

material SUS304



size No.	top box rail		bottom box rail		size(mm) R
	item	price(JPY)	item	price(JPY)	
#2	S2KTR900	88,570	—	—	900
#3	—	—	S3KGR9	33,860	900

Stainless Steel Single Wheel Hanger



material	body	SUS304					
	bearing	polyamide resin					
size No.	item	size(mm)				load bearing (per 2 pcs)	price(JPY)
		B	D	W	d		
#2	S2TAN	106	40	31	1/2"	50kg	6,500
#3	S3TAN	125	50	37	5/8"	75kg	7,100

*#4 and #5 require box rail hanger with bearing.

Stainless Steel Double-Wheel Hanger



material	body	SUS304						
	bearing	oilless metal						
size No.	item	size(mm)					load bearing (per 2 pcs)	price(JPY)
		A	B	D	W	d		
#2	S2FUK	89	98	40	31	1/2"	70kg	8,200
#3	S3FUK	118	111	50	37	5/8"	150kg	10,950
	S3FUK-4B	118	145	50	37	5/8"	150kg	12,860
#4	S4FUK	143	149.5	65	42	5/8"	300kg	12,300

*Use box rail hanger with bearing for #6.

Stainless Steel Single Wheel Hanger (Bearing)



material	bearing part	SUS440C (hardened)					
	others	SUS304					
size No.	item	size(mm)				load bearing (per 2 pcs)	price(JPY)
		B	D	W	d		
#2	S2TANBE	106	40	32	1/2"	50kg	8,650
#3	S3TANBE	125	50	39	5/8"	75kg	14,300
#4	S4TANBE	157.5	65	44	5/8"	180kg	21,400
#5	S5TANBE	206	80	53.5	3/4"	250kg	47,400

Stainless Steel Double-Wheel Hanger (Bearing)



material	bearing part	SUS440C (hardened)						
	others	SUS304						
size No.	item	size(mm)					load bearing (per 2 pcs)	price(JPY)
		A	B	D	W	d		
#2	S2FUKBE	88	101	40	32	1/2"	70kg	17,800
#3	S3FUKBE	109	114	50	39	5/8"	150kg	22,660
	S3FKB4B	109	143	50	39	5/8"	150kg	24,570
#4	S4FUKBE	138	153.5	65	44	5/8"	300kg	32,600
#5	S5FUKBE	168	205	80	53.5	3/4"	500kg	68,000

Stainless Steel Single Wheel Hanger (Duracon)



*Available for #2 box rail made of aluminium, steel, and stainless steel.

material	body	SUS304					
	bearing	polyamide resin					
	wheel	polycetal Duracon					
size No.	item	size(mm)				load bearing (per 2 pcs)	price(JPY)
		B	D	W	d		
#2	SP2TAN	105	38	31	1/2"	50kg	5,660

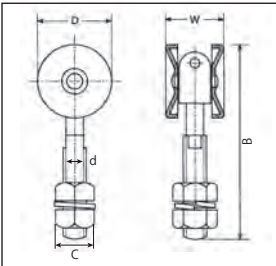
Stainless Steel Double-Wheel Hanger (Duracon)



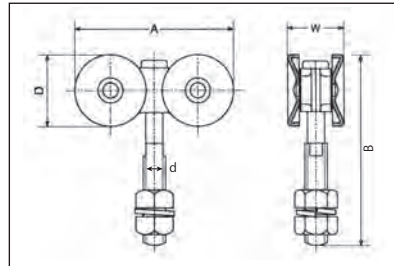
*Available for #2 box rail made of aluminium, steel, and stainless steel.

material	body	SUS304						
	bearing	stainless steel oilless metal						
	wheel	polycetal Duracon						
size No.	item	size(mm)					load bearing (per 2 pcs)	price(JPY)
		A	B	D	W	d		
#2	SP2FUK	87	97	38	31	1/2"	70kg	6,930

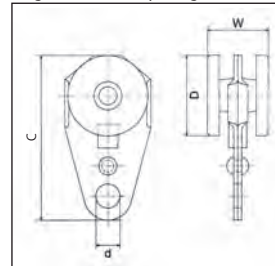
Single wheel hanger



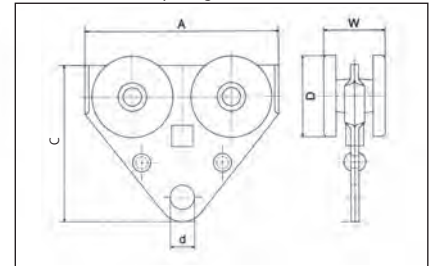
Double-wheel hanger



Single Wheel Trolley Hanger



Double-Wheel Trolley Hanger

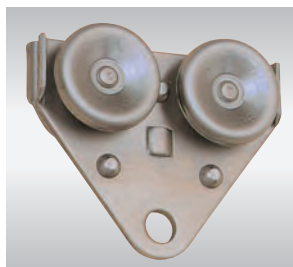


Stainless Steel Single Wheel Trolley Hanger



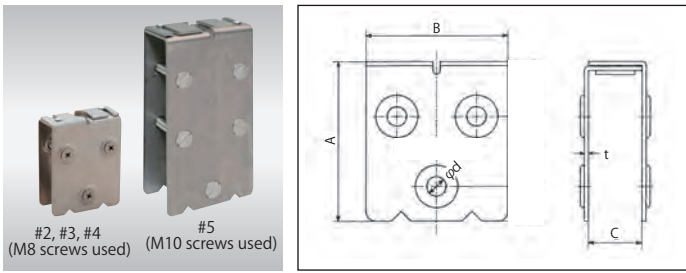
material	body	SUS304					
	bearing	stainless steel oilless metal					
size No.	item	size(mm)				load bearing (per 1 pc)	price(JPY)
		C	D	W	d		
#2	S2TNLL	81	40	31	12	25kg	3,900
#3	S3TNLL	100	50	37	15	37.5kg	4,270
#4	S4TNLL	118	65	42	20	90kg	6,800

Stainless Steel Double-Wheel Trolley Hanger



material	body	SUS304						
	bearing	stainless steel oilless metal						
size No.	item	size(mm)					load bearing (per 1 pc)	price(JPY)
		A	C	D	W	d		
#2	S2FKLL	95	77	40	31	12	25kg	7,000
#3	S3FKLL	126	90	50	37	15	37.5kg	7,700
#4	S4FKLL	150	105	65	42	20	90kg	10,600

Stainless Steel Aprons

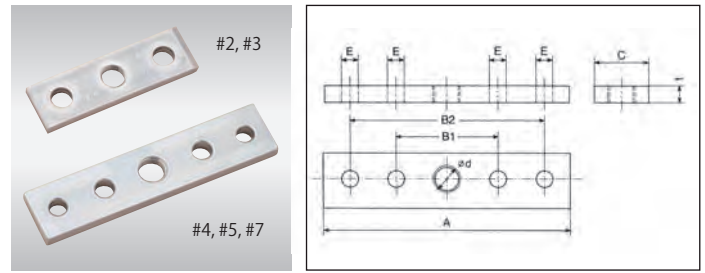


Used for connection between wooden doors and hanger wheels.

sizeNo.	item	size(mm)					price(JPY)
		A	B	C	d	t	
#2	S2AP	90	80	30~45	10	2.0	3,430
#3	S3AP	112	90	34~50	10	2.5	4,150
#4	S4AP	127	100	38~60	10	2.5	5,810
#5	S5AP	208	110	50~70	13	4.0	21,000

material SUS304

Stainless Steel Plates

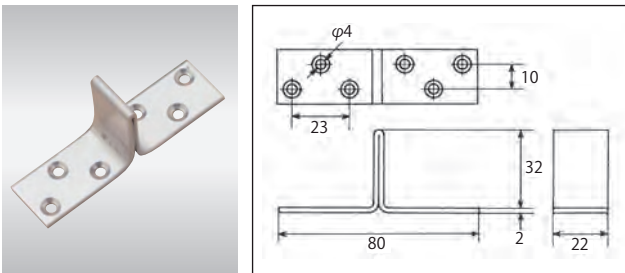


A plate fixed on the top of the door which connects with wheels.

size No.	item	size(mm)							price(JPY)
		A	B1	B2	C	E	d	t	
#2	S2PL	80	54	—	25	10	W1/2	6	2,660
#3	S3PL	100	68	—	32	10	W5/8	9	2,930
#4	S4PL	145	60	115	32	10	W5/8	10	4,430
#5	S5PL	205	80	160	50	15	W3/4	12	5,650

material SUS304

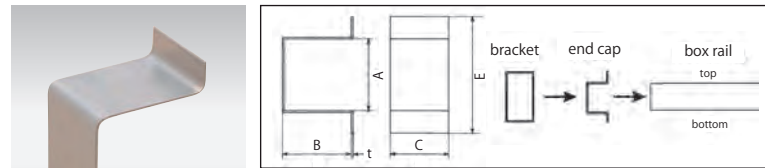
Stainless Steel Floor Center Stop



material SUS304

sizeNo.	item	price(JPY)
#3	S3SEK	1,080

Stainless Steel Box Rail End Caps



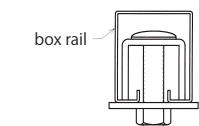
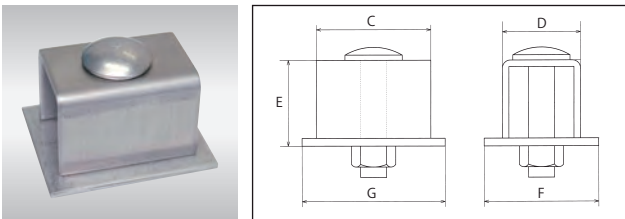
● Used as end caps of wheel door hangers.

size No.	item	size(mm)					price(JPY)
		A	B	C	E	t	
#2	S2ST	46	45	37	74	1.2	750
#3	S3ST	60	47	47	88	1.2	840
#4	S4ST	78	59	55	110	1.2	1,090
#5	S5ST	94	65	65	130	1.5	1,430

material SUS304

● Door stops needed as a stopper of wheels.

Stainless Steel Center Door Stop



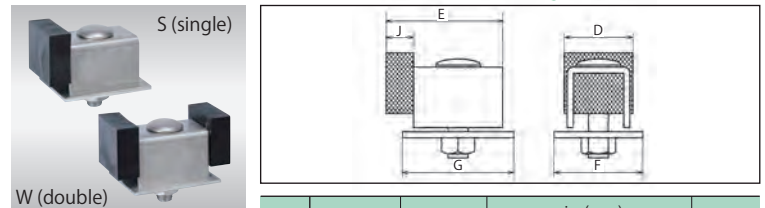
material SUS304

size No.	item	size(mm)					price(JPY)
		C	D	E	F	G	
#3	S3TOA	44	30	33	44	55	1,660
#5	S5TOA	40	56	56	70	48	3,880

*Door stop with pads are required for urethane or Duracon wheels.

*#3 can be used as #2 or #4, #5 can be used as #6.

Stainless Steel Door Stop With Pad S (single) / W (double)



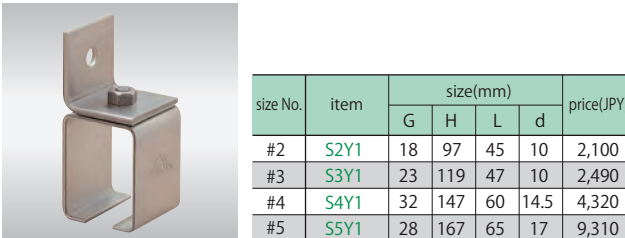
● PVC used as a pad is RoHS compliant product.
● W(double) has pads on both sides.

size No.	item	pad	size(mm)					price(JPY)
			D	E	F	G	J	
#3	S3PTOAS	single	34	57.5	44	55	13.5	3,180
#5	S5PTOAS	single	56	55.5	70	48	15.5	5,240
#3	S3PTOAW	double	34	71	44	55	13.5	3,300
#5	S5PTOAW	double	56	71	70	48	15.5	5,580

material body SUS304
pad PVC

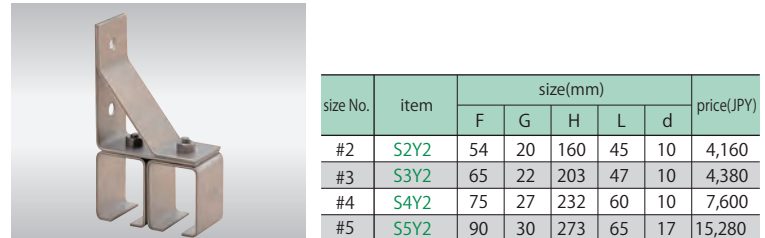
*Door stop with pads are required for urethane or Duracon wheels.
*#3 can be used as #2 or #4, #5 can be used as #6.

Stainless Steel Single Box Rail Bracket (Wall Mount)



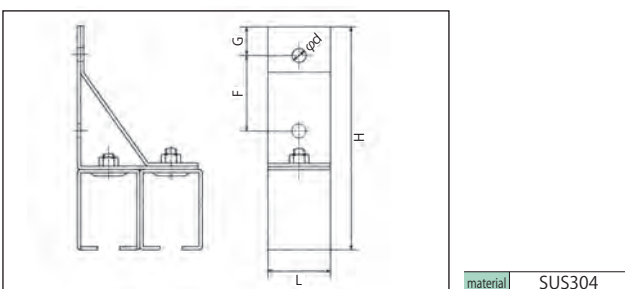
size No.	item	size(mm)				price(JPY)
		G	H	L	d	
#2	S2Y1	18	97	45	10	2,100
#3	S3Y1	23	119	47	10	2,490
#4	S4Y1	32	147	60	14.5	4,320
#5	S5Y1	28	167	65	17	9,310

Stainless Steel Double Box Rail Bracket (Wall Mount)

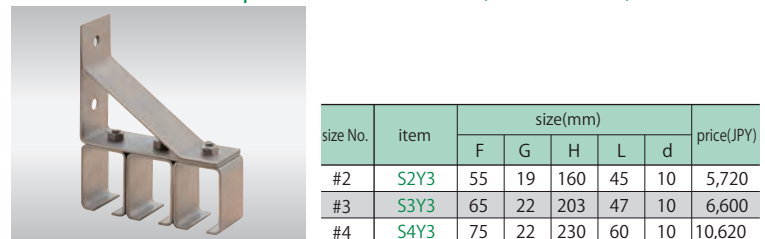


size No.	item	size(mm)					price(JPY)
		F	G	H	L	d	
#2	S2Y2	54	20	160	45	10	4,160
#3	S3Y2	65	22	203	47	10	4,380
#4	S4Y2	75	27	232	60	10	7,600
#5	S5Y2	90	30	273	65	17	15,280

Stainless Steel Triple Box Rail Bracket (Wall Mount)



material SUS304



size No.	item	size(mm)					price(JPY)
		F	G	H	L	d	
#2	S2Y3	55	19	160	45	10	5,720
#3	S3Y3	65	22	203	47	10	6,600
#4	S4Y3	75	22	230	60	10	10,620

Stainless Steel Single Box Rail Jointing Bracket (Wall Mount)



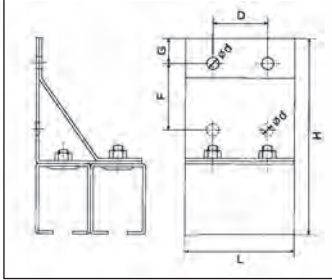
size No.	no jointer		with jointer		size(mm)				
	item	price(JPY)	item	price(JPY)	D	G	H	L	d
#2	S2Y1	4,480	S2Y1-J	5,540	45	18	97	90	10
#3	S3Y1	5,040	S3Y1-J	6,120	47	23	119	94	10
#4	S4Y1	8,700	S4Y1-J	9,890	60	32	147	120	14.5
#5	S5Y1	19,450	—	—	65	28	167	130	17

Stainless Steel Double Box Rail Jointing Bracket (Wall Mount)



size No.	no jointer		with jointer		size(mm)					
	item	price(JPY)	item	price(JPY)	D	F	G	H	L	d
#2	S2Y2	8,320	S2Y2-J	10,440	45	54	20	160	90	10
#3	S3Y2	8,760	S3Y2-J	10,920	47	65	22	203	94	10
#4	S4Y2	15,310	S4Y2-J	17,690	60	75	27	232	120	10
#5	S5Y2	34,890	—	—	65	90	30	273	130	17

Box rail jointing bracket (wall mount)



Jointer



*Reduced slips on the rail.
*Can't use with carved rails.

material SUS304

Stainless Steel Triple Box Rail Jointing Bracket (Wall Mount)



size No.	no jointer		with jointer		size(mm)					
	item	price(JPY)	item	price(JPY)	D	F	G	H	L	d
#2	S2Y3	14,060	S2Y3-J	17,240	45	55	19	160	90	10
#3	S3Y3	13,100	S3Y3-J	16,340	47	65	22	203	94	10
#4	S4Y3	21,650	S4Y3-J	25,220	60	75	22	230	120	10

Stainless Steel Single Box Rail Bracket (Ceiling Mount)



size No.	item	size(mm)					price(JPY)
		D	E	F	L	d	
#2	S2T1	96	128	73	45	10	2,210
#3	S3T1	112	142	89	47	10	2,490
#4	S4T1	145	177	111	60	10	4,320
#5	S5T1	142	186	135	65	17	13,400

Stainless Steel Single Box Rail Jointing Bracket (Ceiling Mount)



size No.	no jointer		with jointer		size(mm)					
	item	price(JPY)	item	price(JPY)	D	E	F	G	L	d
#2	S2T1	4,600	S2T1-J	5,660	96	128	73	45	90	10
#3	S3T1	5,040	S3T1-J	6,120	112	142	89	47	94	10
#4	S4T1	8,700	S4T1-J	9,890	145	177	111	60	120	10
#5	S5T1	24,950	—	—	142	186	135	65	130	17

Stainless Steel Double Box Rail Bracket (Ceiling Mount)



size No.	item	size(mm)					price(JPY)
		D	E	F	L	d	
#2	S2T2	142	174	73	45	10	4,040
#3	S3T2	168	198	89	47	10	4,370
#4	S4T2	209	241	111	60	10	7,710
#5	S5T2	225	270	135	65	17	15,000

Stainless Steel Double Box Rail Jointing Bracket (Ceiling Mount)



size No.	no jointer		with jointer		size(mm)					
	item	price(JPY)	item	price(JPY)	D	E	F	G	L	d
#2	S2T2	8,150	S2T2-J	10,270	142	174	73	45	90	10
#3	S3T2	8,760	S3T2-J	10,920	168	198	89	47	94	10
#4	S4T2	15,310	S4T2-J	17,690	209	241	111	60	120	10
#5	S5T2	28,600	—	—	225	270	135	65	130	17

Stainless Steel Triple Box Rail Bracket (Ceiling Mount)



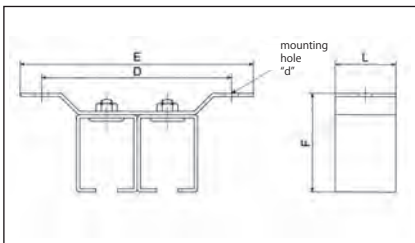
size No.	item	size(mm)					price(JPY)
		D	E	F	L	d	
#2	S2T3	188	220	73	45	10	6,930
#3	S3T3	228	258	89	47	10	6,760
#4	S4T3	278	312	111	60	10	10,610

Stainless Steel Triple Box Rail Jointing Bracket (Ceiling Mount)



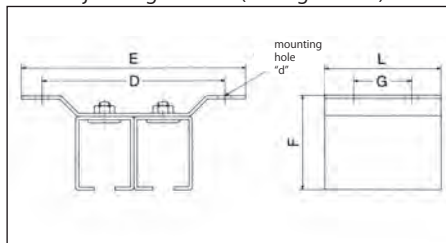
size No.	no jointer		with jointer		size(mm)					
	item	price(JPY)	item	price(JPY)	D	E	F	G	L	d
#2	S2T3	12,970	S2T3-J	16,150	188	220	73	45	90	10
#3	S3T3	13,110	S3T3-J	16,350	228	258	89	47	94	10
#4	S4T3	21,650	S4T3-J	25,220	278	312	111	60	120	10

Box rail bracket (ceiling mount)



material SUS304

Box rail jointing bracket (ceiling mount)



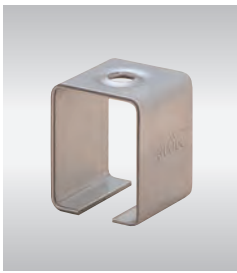
material SUS304

Jointer

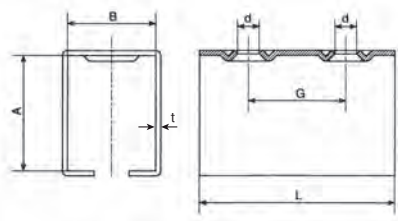


*Reduced slips on the rail.
*Can't use with carved rails.

Stainless Steel Box Rail Direct Bracket (Ceiling Mount)



size No.	item	size(mm)					price(JPY)
		A	B	L	d	t	
#2	S2BX	53	40	45	10	2.5	1,330
#3	S3BX	67	50	47	10	2.5	1,440
#4	S4BX	84	58	60	10	3.0	2,660
#5	S5BX	100	68	65	17	5.0	5,270



material SUS304

Stainless Steel Box Rail Direct Jointing Bracket (Ceiling Mount)



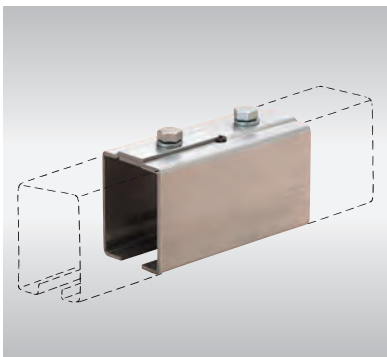
size No.	no jointer		with jointer		size(mm)					
	item	price(JPY)	item	price(JPY)	A	B	G	L	d	t
#2	S2TBX	2,710	S2TBX-J	3,770	53	40	45	90	10	2.5
#3	S3TBX	2,820	S3TBX-J	3,900	67	50	47	94	10	2.5
#4	S4TBX	5,320	S4TBX-J	6,510	84	58	60	120	10	3.0
#5	S5TBX	11,370	—	—	100	68	65	130	17	5.0

Jointer



- *Reduced slips on the rail.
- *Can't use with carved rails.

Stainless Steel Box Rail Joint Holder

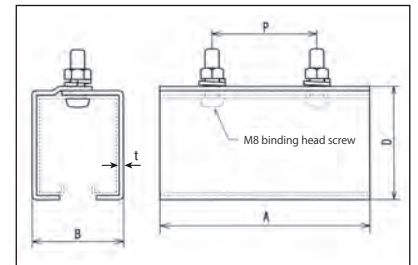


- This fitting can connect box rails to make a long box rail.
- *Mount brackets right next to a holder for reinforcement.
- *Only wall mount and ceiling mount brackets can be used together.
- *Use box rail jointing brackets (with jointer) for box rail direct brackets and make them the same height.
- *Cannot be used for connection with curved rails.

material SUS304

size No.	item	size(mm)					price(JPY)
		A	B	D	P	t	
#2	S2TRHD	120	42	51	60	2	5,170
#3	S3TRHD	120	52	65	60	2.5	5,390
#4	S3TRHD	120	62	85	60	3	6,600

*#2-#4 straight box rails have a hole drilling for holders.



Stainless Steel Rail Fixing Plate



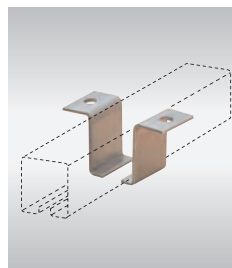
thickness : 3mm

- Used for reducing slips between a box rails and bracket.

size No.	item	size(mm)					price(JPY)
		A	B	C	D	bolt	
#2	S2KB	84	39	66	28	M8×12	1,100
#3	S3KB	84	49	66	28	M8×12	1,320
#4	S4KB	110	57	89	33	M10×12	1,650
#5	S5KB	110	67	89	33	M10×12	1,980

*Only wall mount and ceiling mount brackets can be used together. It can't be used with direct brackets.

Stainless Steel Box Rail Fit Bracket (Ceiling Mount)



- Used for reducing slips between a box rail and a bracket.
- Left-and-right pair

size No.	item	size(mm)					price(JPY)
		A	C	D	E	t	
#2	S2FIT	54	45	69	94	3	1,490
#3	S3FIT	67	47	80	107	3	1,550
#4	S4FIT	88	60	95	126	4	2,940

Stainless Steel Rail Fixing Plate For Jointing



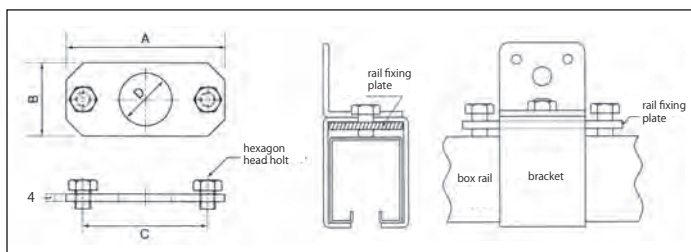
thickness : 4mm

- Used for reducing slips at joint parts of splice brackets.
- Available for jointing brackets ceiling mount and wall mount.

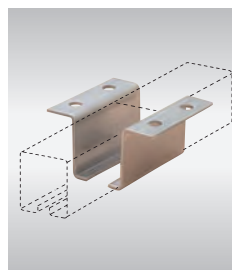
size No.	item	size(mm)					price(JPY)
		A	B	C	D	bolt	
#2	S2TKB	129	39	111	28	M8×12	2,160
#3	S3TKB	131	49	113	28	M8×12	2,600
#4	S4TKB	170	57	149	33	M10×12	3,270
#5	S5TKB	175	67	154	33	M10×12	3,930

*Box rail direct bracket requires a jointer instead of a rail fixing plate. *Used same as a rail fixing plate.

material SUS304



Stainless Steel Box Rail Fit Jointing Bracket (Ceiling Mount)



- Used for reducing slips between a box rail and a bracket.
- Left-and-right pair

size No.	item	size(mm)						price(JPY)
		A	C	D	E	F	t	
#2	S2FITT	54	90	69	94	45	3	2,990
#3	S3FITT	67	94	80	107	47	3	3,100
#4	S4FITT	88	120	95	126	60	4	5,880

material SUS304

