



PAT.P

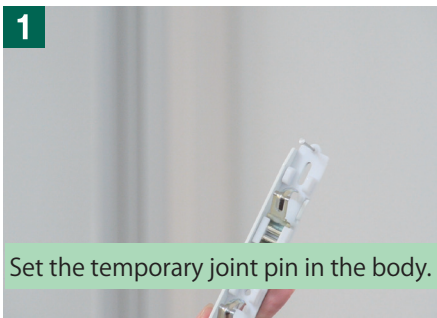
"I'M CLAMP" Wall shelf brackets

*load bearing includes the weight of the shelf board.

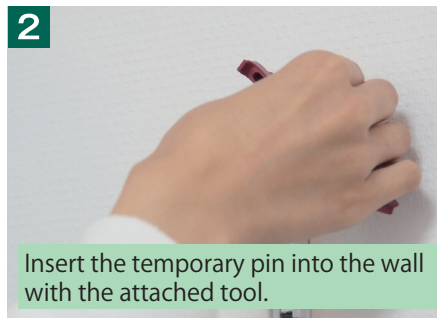
Stylish wall shelves as a decorative accent for your room

You can mount it quick and easy. Even if there's no wood backing, you can mount it to gypsum board directly. It's made of scratch-proof material, also applicable to acrylic and glass shelves, and 6-21mm thick shelf boards are available. Why don't you design the room with your favorites?

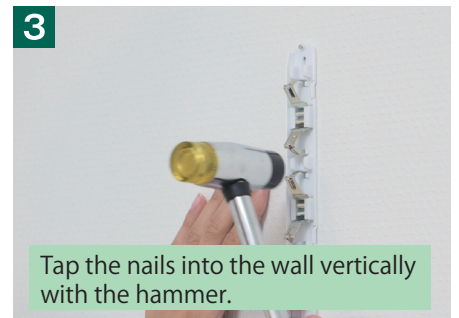
Easy mounting on the wall



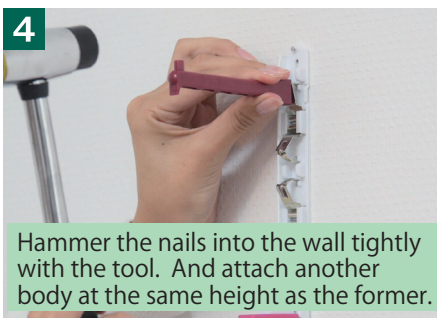
1 Set the temporary joint pin in the body.



2 Insert the temporary pin into the wall with the attached tool.



3 Tap the nails into the wall vertically with the hammer.



4 Hammer the nails into the wall tightly with the tool. And attach another body at the same height as the former.



5 Put the shelf board and turn the knobs.



6 Put the cover over the body. **FINISH!**

Coconi Wall shelf brackets "I'M CLAMP"

material: [body] steel / [decorative cover] ABS resin

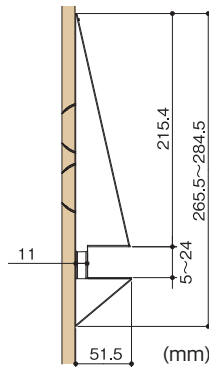
item	color	quantity/pc	quantity/box
CC-500 LG	gray	2 pcs	20 packs
CC-500 RE	red		
CC-500 GR	green		
CC-500 BL	blue		

*Wooden or acrylic board are unattached.
*Wooden board needs to be screwed without nails.

Transparent acrylic shelf board

item	color	quantity/pc	quantity/box
CC-550 AG 6020	transparent	1 pc	10 pcs

*Shelf board size : W600×D200×T8 (mm). Weight : 1.2 kg



CC-500 LG



CC-500 RE



CC-500 GR



CC-500 BL



■ SIMPLE & CUTE interior hooks

Would you like to change the walls into a little storage space? You can easily attach the hooks everywhere you like, and hang small articles such as a boot brush, a shoehorn, or coats and hats at the front door.



See instruction video

Easy mounting on the wall

1



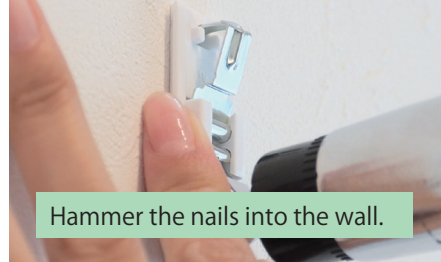
Detach the cover from the body.

2



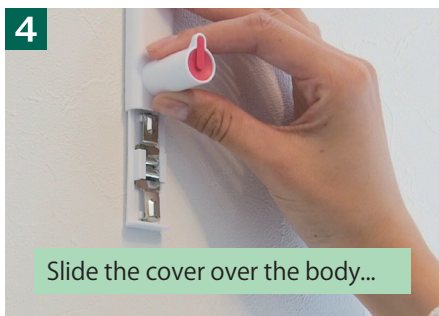
Position it on the wall.

3



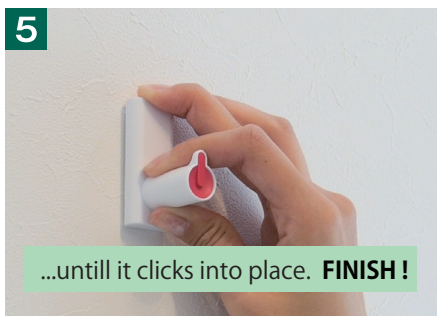
Hammer the nails into the wall.

4



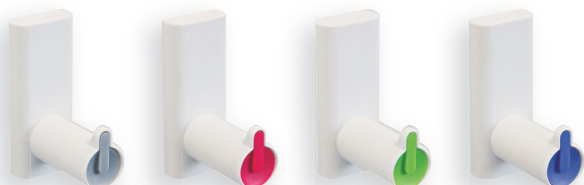
Slide the cover over the body...

5



...until it clicks into place. **FINISH!**

4 accent colors available



CC-501 LG

CC-501 RE

CC-501 GR

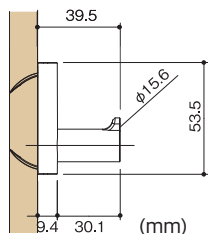
CC-501 BL



Coconi Wall hooks "I'M HOOK"

material: [body] ABS resin / [mounting hardware] steel

item	color	quantity/pack	quantity/box
CC-501 LG	gray	2 pcs	20 packs
CC-501 RE	red		
CC-501 GR	green		
CC-501 BL	blue		



*Used for gypsum board only. Not used for wooden board.

Shimizu Co.,Ltd.

1-4 Kanamono-Cho, Higashiosaka,
Osaka, 577-0815, JAPAN
website: www.shimizu-net.co.jp
mail: info@shimizu-net.co.jp