

"EASY-MOVER" makes so easy one-man work of moving furniture, room improvement, lifting and moving of heavy items

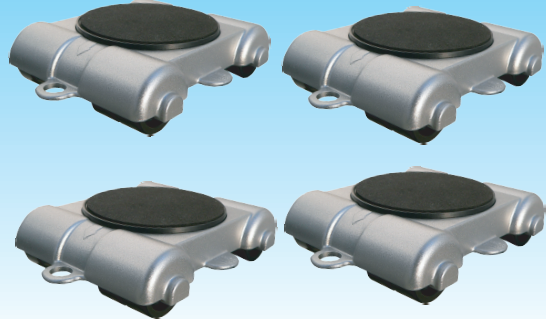
"EASY-MOVER" is a safe and convenient tool with 6 features and mechanism (PAT.) generated under brand-new conception and designing.

Applicable to move weight of maximum 300Kgs!

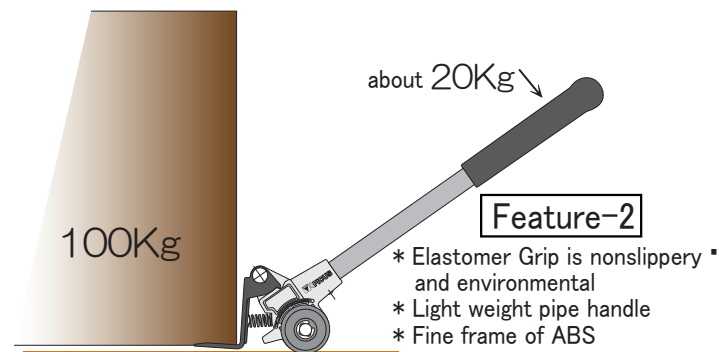
Portable powerful LIFTER



Safe, sturdy TRUCKS with new design of low and wide



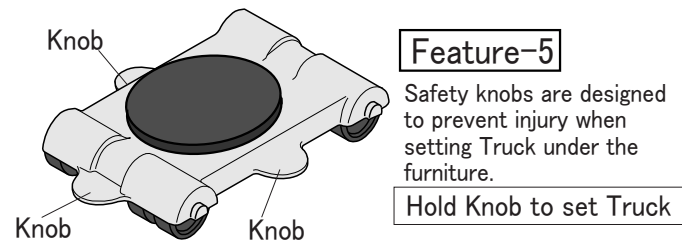
Feature-1 Easy lift of 100Kgs by only 20Kgs power



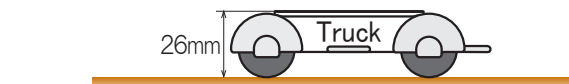
Feature-2
 * Elastomer Grip is nonslippery and environmental
 * Light weight pipe handle
 * Fine frame of ABS

Feature-3 Toe of Fork is tapered for easy insert under the body. Surface of Fork is cation finished for scratch.

Feature-4 Wide body Porter is stable and 100Kgs proof



Feature-5
 Safety knobs are designed to prevent injury when setting Truck under the furniture.
 Hold Knob to set Truck



Feature-6 Truck is only 26mm high so clearance is low and it prevents fall of furniture and its attachments.

EXAMPLE



'EASY-MOVER' SET consists of:
 Lifter : 1Unit (length 315mm)
 Trucks : 4Units (102x81x26mm)

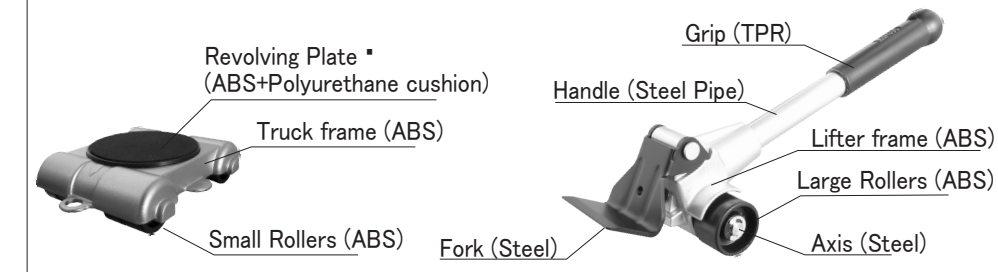
* Capacity of Lifter : 150Kgs at one lift work
 * Load of Truck : 100Kgs per unit

INSTRUCTION MANUAL

"EASY-MOVER" is a safe and convenient tool with 6 features and mechanism (PAT.) generated under brand-new conception and designing.

"EASY-MOVER" makes so easy one-man work of room improvement, moving heavy planters or moving heavy furniture for sweeping the narrow space behind.

Name and Material of Parts



Handle of Lifter is designed for safety to bend gradually in case Lifter is loaded over 150Kgs. Please stop work when Handle starts to bend by the excessive load.

Please inspect all parts such as Lifter, Truck Rollers, Fork and others are without damage, crack, distortion. Please do not use when anything is found wrong. Please remove any unstable or dangerous item on the furniture before moving. Please keep children away from working area and assure there is no danger before starting work.

DIRECTION

1. Make Lifter and Truck ready to use.
2. Insert Fork of Lifter underneath the body to move. Refer Fig.1 (Push away upper part of the body to make a little clearance for easier insert of Fork)
3. Push the Fork to the end completely, then push down the Handle of Lifter. Lifter generates 5 times lifting power of user by leverage so apply a little power slowly. It is so dangerous to apply strong power that damage or turnover of the body.
4. Moving direction of Truck is shown by arrows so hold the safety knobs of Truck pointing at direction of moving line and insert into the clearance made by Lifter to place under the body.
5. Set Truck at other corners in same manner (Fig.3). Light (less than 100Kgs) and stable body may be moved by 3 Trucks, 2 at front and 1 at rear (Fig.4) **WARNING** : 1 at front is quite dangerous and never use such way.
6. Make sure there is no bump, obstacle or slope, then start moving slowly.
7. When the body reaches the goal, lift the body by Lifter to remove Trucks.

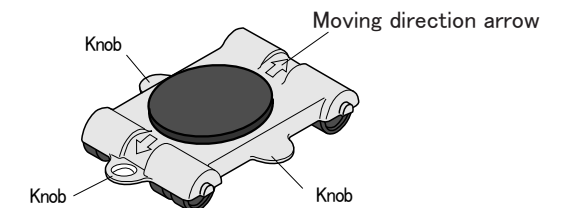
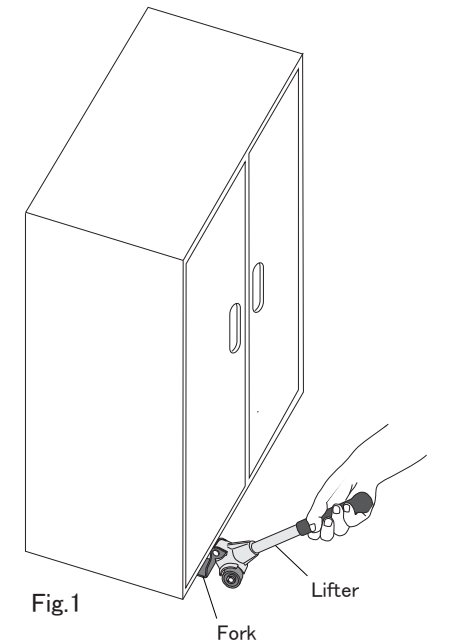


Fig.2 Truck

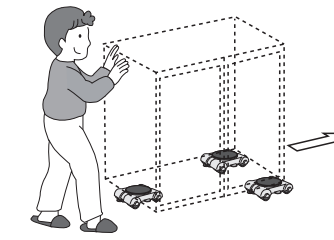
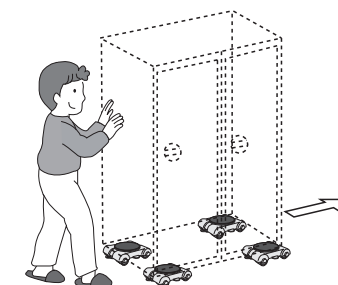


Fig.3 Use 4 Trucks

Fig.4 Use 3 Trucks