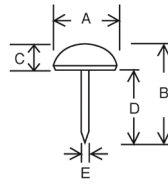


Except for putting the taiko drums of leather, byou tacks can be used as parts for Japanese style furniture, crafts, the decoration of leather chairs, also used for covering the screw head.

Taiko Drums Byou Tacks (太鼓釘)



| | |
|----------|---|
| material | pure copper, pure brass, iron |
| finish | polished copper and brass, painted iron |

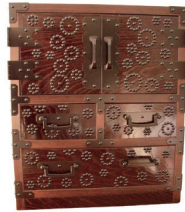
●Price is for a box unit.

* () is the size for iron tack.

| pure copper (polished) | | | pure brass (polished) | | | steel (black color) | | | item | size (mm) | | | | | q'ty box |
|------------------------|------|-------------|-----------------------|------|-------------|---------------------|------|-------------|---------------------------------|-----------------|----------|----------|---------------|-----------------|----------|
| product code | item | price (JPY) | product code | item | price (JPY) | product code | item | price (JPY) | | A head diameter | B length | C height | D stem length | E wire diameter | |
| 81829359 | #101 | 4,500 | 81829365 | #111 | 3,900 | 81829371 | #161 | 2,000 | taiko drums byou tacks, 9 × 14 | 9 | 14 | 3 | 11 | 1.25 | 1,000 |
| 81829360 | #102 | 6,100 | 81829366 | #112 | 5,300 | 81829372 | #162 | 2,800 | taiko drums byou tacks, 11 × 16 | 10.5 | 16 | 3.5 | 12.5 | 1.47 | 1,000 |
| 81829361 | #103 | 9,700 | 81829367 | #113 | 8,400 | 81829373 | #163 | 3,800 | taiko drums byou tacks, 13 × 19 | 13 | 19 | 4 | 15 | 1.6 (1.72) | 1,000 |
| 81829362 | #104 | 7,500 | 81829368 | #114 | 6,500 | 81829374 | #164 | 3,000 | taiko drums byou tacks, 16 × 22 | 16 | 22 | 5.5 | 16.5 | 1.6 (1.72) | 500 |
| 81829363 | #105 | 10,400 | 81829369 | #115 | 8,800 | 81829375 | #165 | 3,600 | taiko drums byou tacks, 19 × 25 | 19 | 25 | 6.5 | 18.5 | 1.8 (2.0) | 400 |
| 81829364 | #106 | 9,600 | 81829370 | #116 | 8,200 | 81829376 | #166 | 3,400 | taiko drums byou tacks, 24 × 30 | 23.5 | 30 | 8 | 22 | 2.3 (2.4) | 200 |
| 81812574 | #107 | 14,000 | 81812578 | #117 | 13,500 | 81812582 | #167 | 6,100 | taiko drums byou tacks, 30 × 40 | 30 | 40 | 10 | 30 | 3 | 50 |
| 81812575 | #108 | 12,900 | 81812579 | #118 | 12,000 | 81812583 | #168 | 5,310 | taiko drums byou tacks, 35 × 40 | 35 | 40 | 11 | 29 | 3 | 30 |
| 81812576 | #109 | 15,400 | 81812580 | #119 | 14,300 | 81812584 | #169 | 6,500 | taiko drums byou tacks, 40 × 50 | 40 | 50 | 14 | 36 | 3.8 | 20 |
| 81812577 | #110 | 11,000 | 81812581 | #120 | 10,000 | 81812585 | #170 | 4,700 | taiko drums byou tacks, 50 × 50 | 50 | 50 | 17 | 33 | 3.8 | 10 |

Chrysanthemum Decorative Byou Tacks (菊釘)

| | |
|----------|-------------------------|
| material | pure copper, pure brass |
| finish | polished |



Turtle Back Pattern Byou Tacks (亀甲釘)

| | | |
|----------|------------|---------------|
| material | pure brass | |
| finish | 613-616 | plain |
| | 623-626 | bronze plated |
| | 633-636 | nickel plated |



* price for a box unit

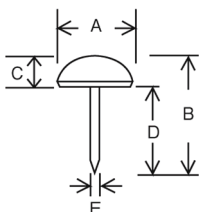
| product code | item | size (mm) | | material | q'ty box | price (JPY) |
|--------------|------------------------------|--------------|--------|----------|----------|-------------|
| | | diameter (φ) | length | | | |
| 81825610 | 701 pure copper, small | 12 | 16 | copper | 1,000 | 10,000 |
| 81825611 | 702 pure copper, medium | 14 | 19 | copper | 500 | 9,000 |
| 81812634 | 703 pure copper, large | 17 | 20 | copper | 500 | 13,000 |
| 81812635 | 704 pure copper, extra large | 20 | 22 | copper | 200 | 8,500 |
| 81812636 | 705 pure copper, 23 | 23 | 25 | copper | 200 | 13,000 |
| 81825612 | 711 pure brass, small | 12 | 16 | brass | 1,000 | 9,000 |
| 81825613 | 712 pure brass, medium | 14 | 19 | brass | 500 | 8,100 |
| 81825614 | 713 pure brass, large | 17 | 20 | brass | 500 | 12,000 |
| 81825615 | 714 pure brass, extra large | 20 | 22 | brass | 200 | 7,400 |
| 81825616 | 715 pure brass, 23 | 23 | 25 | brass | 200 | 11,000 |

| product code | item | size (mm) | | q'ty box | price (JPY) |
|--------------|------------------------------|--------------|--------|----------|-------------|
| | | diameter (φ) | length | | |
| 81825617 | 613 pure brass, small | 11.5 | 16 | 1,000 | 9,000 |
| 81825618 | 614 pure brass, medium | 13 | 19 | 500 | 9,000 |
| 81825619 | 615 pure brass, large | 16 | 22 | 300 | 9,300 |
| 81825620 | 616 pure brass, extra large | 22 | 30 | 200 | 14,000 |
| 81825621 | 623 pure bronze, small | 11.5 | 16 | 1,000 | 11,000 |
| 81825622 | 624 pure bronze, medium | 13 | 19 | 500 | 11,000 |
| 81825623 | 625 pure bronze, large | 16 | 22 | 300 | 12,000 |
| 81825624 | 626 pure bronze, extra large | 22 | 30 | 200 | 18,000 |
| 81825625 | 633 pure nickel, small | 11.5 | 16 | 1,000 | 11,000 |
| 81825626 | 634 pure nickel, medium | 13 | 19 | 500 | 11,000 |
| 81825627 | 635 pure nickel, large | 16 | 22 | 300 | 12,000 |
| 81825628 | 636 pure nickel, extra large | 22 | 30 | 200 | 18,000 |

Lattice Byou Tacks (格子釘)

●Can be used as decoration byou tacks on various kinds of parts such as cosmetic boxes or jewelry boxes, etc.

| | |
|----------|-------------------------|
| material | pure copper, pure brass |
| finish | polished |



* price for a box unit.

| product code | item | size (mm) | | | | | material | q'ty box | price (JPY) |
|--------------|--------------------------|-----------------|----------|----------|---------------|-----------------|----------|----------|-------------|
| | | A head diameter | B length | C height | D stem length | E wire diameter | | | |
| 81825606 | 201 pure copper, 7 × 10 | 7 | 10 | 2.7 | 7.3 | 1.25 | copper | 2,000 | 8,100 |
| 81829349 | 202 pure copper, 7 × 13 | 7 | 13 | 2.7 | 10.3 | 1.25 | copper | 2,000 | 8,200 |
| 81825607 | 203 pure copper, 7 × 16 | 7 | 16 | 2.7 | 13.3 | 1.25 | copper | 1,000 | 4,300 |
| 81829350 | 204 pure copper, 7 × 19 | 7 | 19 | 2.7 | 16.3 | 1.25 | copper | 1,000 | 4,400 |
| 81829351 | 205 pure copper, 7 × 25 | 7 | 25 | 2.7 | 22.3 | 1.25 | copper | 1,000 | 5,200 |
| 81829352 | 206 pure copper, 10 × 32 | 10 | 32 | 3 | 29 | 1.6 | copper | 1,000 | 8,600 |
| 81829353 | 207 pure copper, 10 × 36 | 10 | 36 | 3 | 33 | 1.6 | copper | 1,000 | 9,000 |
| 81825608 | 211 pure brass, 7 × 10 | 7 | 10 | 2.7 | 7.3 | 1.25 | brass | 2,000 | 7,200 |
| 81829354 | 212 pure brass, 7 × 13 | 7 | 13 | 2.7 | 10.3 | 1.25 | brass | 2,000 | 7,300 |
| 81825609 | 213 pure brass, 7 × 16 | 7 | 16 | 2.7 | 13.3 | 1.25 | brass | 1,000 | 3,900 |
| 81829355 | 214 pure brass, 7 × 19 | 7 | 19 | 2.7 | 16.3 | 1.25 | brass | 1,000 | 4,100 |
| 81829356 | 215 pure brass, 7 × 25 | 7 | 25 | 2.7 | 22.3 | 1.25 | brass | 1,000 | 4,700 |
| 81829357 | 216 pure brass, 10 × 32 | 10 | 32 | 3 | 29 | 1.6 | brass | 1,000 | 7,800 |
| 81829358 | 217 pure brass, 10 × 36 | 10 | 36 | 3 | 33 | 1.6 | brass | 1,000 | 7,100 |